

SERVING CLEOBURY COUNTRY

MAY 2022

AN APOLOGY

In April's Clarion we carried the news that the Food Bank would be offering an evening opening once a month, to help those who could not make the regular Friday morning. But we got it wrong and said that it would open on the first Friday in the month. Doh!

In fact the evening sessions will be from 6.00 until 7.00 on the first Wednesday. That means on the 4th this month and then the first day of June. We will also include the evening dates in the Social Calendar.

GREEN LIVING DAY

Next month we'll be doubly busy with Her Majesty's 70th anniversary as our monarch to celebrate, with the town's festival playing a supporting role. This month there's a

new concept to attract your attention on the 7th - Green Living Day.

It's a joint venture by Town Councillors Debbie Brown and John Greaves, with a wide range of businesses and interests there to talk about cleaner living and helping to lengthen the healthy life of our planet. And please don't think there's nothing each of us can do - talk to people at this event and you'll learn more. Open from 10.00 to 3.00 in the Market Hall.

ARMED FORCES OUTREACH

The Armed Forces Outreach will be in Cleobury Community Hub on 24 May from 1.30pm - 3.30pm. Come along for a coffee and chat.

This body is designed to provide help and support to all military personnel,

veterans, and their families. Working with the service charities and organisations the outreach assists and facilitates to ensure that current and former military personnel have access to the right support. We have also formed close links with several businesses, charities, and organisations across Shropshire, many of whom have signed the Armed Forces Covenant to demonstrate their support. A veteran is anyone who has served for one day and has a service number. This will be required to access support from the service charities. If the service number cannot be confirmed it can be traced but it will take time.

*Mike Hermolle
Royal British Legion branch chairman*



Home Support Services

All staff enhanced DBS checked with over 20yrs experience and training within the local authority/social services mainstream and dementia care sector. Fully insured.

Are you in need of support with the following basic day to day tasks?

Assistance during the day or night	Completing Forms
Companionship	Pet Care
Shopping/Household tasks	Attending social events/ appointments

Contact Liz
Tel: 01299 271623
Mob: 07826 929222
liz@lifelifeathome.co.uk

Other support services available on request.

www.lifelifeathome.co.uk

Contact Tracey
Tel: 01299 211660
Mob: 07957 659909
tracey@lifelifeathome.co.uk



Victoria Allen Funeral Services

An Independent Family Business offering a
Personal and Professional Service

Over 25 years' Experience

Competitively Priced

Private Chapel of Rest

Golden Charter Pre-Paid Funeral Plans

Covering All Areas

Home Visits Available

01584 879035

24 Hour Service

8 Charlton Rise, Ludlow, Shropshire, SY8 1ND
www.vallenfuneralsludlow.co.uk
Email: vafs@btinternet.com



The Cleobury Clarion, May 2022
Volume Eighteen - Edition Two



*The Spice Empire sponsors
a golf fund raiser.
See Page 7.*



*Looking very fit, the Teme
Leisure gym is all new.
See Page 27.*



*You want warmth?
Ludlow Logs deliver.
In Business, Page 61.*

And On Other Pages...

- | | |
|-------------------------------------|---------------------------------|
| 5 - Clows Top Gardening Club | 37 - Neen Savage Sunflowers |
| 9 - Another Kudos Blends
Success | 39 - Cleobury Mortimer Benefice |
| 11 - Super Cycling Sportive | 41 - Simon Morton on Gardening |
| 13 - 'A Century of Flowers' | 43 - Save Our Curlews |
| 15 - A Touch of Romance | 45 - Mrs Grumpy |
| 17 - Nearly Dead Poets Society | 47 - The Social Calendar |
| 19 - From The Bandroom | 51 - A Jubilee Beacon |
| 21 - Stepping Out! Walking News | 53 - Cleobury Hub |
| 23 - May in the Wyre Forest | 57 - Let's Beat the Scammers |
| 25 - Philip Dunne MP | 59 - The Town Council Report |
| 31 - Caring for God's Acre | 63 - Local Information |



DRY CLEANING & LAUNDRY SERVICE
20 HIGH STREET, CLEOBURY MORTIMER
01299 270571
HOUSEHOLD & COMMERCIAL WORK WELCOME
FULLY ATTENDED, OPEN 7 DAYS

Self Service ~ Full Service Wash/ Dry/ Fold/ Ironing ~ Large Machine for Big Items
Service Washing for Duvets/ Blankets/ Sleeping Bags ~ Team Sports Kit Laundry Service
Equestrian Rug Cleaning ~ Laundry Service for Pet Items
Professional Shirt Service ~ Nikwax Wash & Proof for Outdoor Clothing

.... the place to air your dirty laundry!



RED HARE

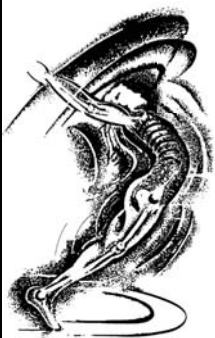
45 HIGH STREET
CLEOBURY MORTIMER
WWW.REDHARESALON.CO.UK

01299 270702

YOUR
HAIR
IS
OUR
BEST
ADVERT

PPD FREE - PARABEN FREE - SULPHATE FREE - CRUELTY FREE

“Red Hare now offers a private hairdressing room. Perfect for those wanting more privacy, peace and quiet“



CLEOBURY CHIROPRACTIC

31 High St. Cleobury Mortimer DY14 8DQ

JS James
Smith
OSTEOPATHS

We offer both **CHIROPRACTIC** and **OSTEOPATHY**,
using gentle methods suitable for all ages.
Appointments available outside of normal working hours.
Both practitioners are fully registered, insured & regulated.

Sue Brown
MA MSc DC MMCA
CHIROPRACTOR

- * BACK PAIN * SCIATICA * POSTURAL PROBLEMS
- * JOINT PAIN * HEADACHES (arising from the neck)
- * Some SPORTS INJURIES

- PLUS** * COMPUTER (DSE) WORKSTATION ASSESSMENTS
* BACK CLASS – Weekly exercise class for those with back/neck pain.

Hands for Heroes
Free Chiropractic Care for War Veterans



iO
THE INSTITUTE
of OSTEOPATHY



01299 519351 / 07932 000028 / 07506 287191

www.notjustaboutbackpain.com

www.jsosteopaths.co.uk

GCC registered
General Chiropractic Council
www.gcc-uk.org

 **General Osteopathic Council**
I'M REGISTERED
Registration no. 9254
www.osteopathy.org.uk

THE CHILDE ENDOWMENT FUND

Students residing in the parishes of Cleobury Mortimer, Neen Sollars, Milson, Coreley, Hopton Wafers, Farlow, Wheathill, Aston Botterell, Stottesdon, Kinlet and Neen Savage are invited by the Trustees to make applications to the above fund for financial assistance to help further their studies.

Details and application forms can be obtained from Lloyds Bank, Cleobury Mortimer, from Lacon Childe School or the Reverend Justin Parker, Clerk to the Trustees of the Fund at Adam House, Birmingham Road, Kidderminster DY10 2SA. The closing date is June 24th.

CLOWS TOP GARDENING CLUB

Two events to tell you about. On Saturday, May 21st we will be holding our Plant Sale and Coffee Morning at Clows Top Victory Hall, -the date carefully chosen because this is the time of year to buy your bedding plants. Other plants will also be on offer, together with a "garden jumble" stall, tombola and of course some delicious cakes to go with your tea or coffee. 10am to 12 noon.

May 25th is the date of our first garden visit, instead of the indoor meeting at the Village Hall. We will be returning to Moors Meadow Garden, Collington, on the Tenbury to Bromyard road. Meet at the Village Hall at 6.30 to share cars. Moors Meadow is a seven acre organic garden; there is a website with more details. If you would like to go, and have not already booked, please let Elva know on 01299 832288.

May is such a wonderful time in the garden and we hope to see you at these events. Remember, the more you put into something, the more you get

out of it! Come along and chat to like-minded people about your own special space.

Judith.Lawson

MAY 14th CAR BOOT SALE VENUE

Ahem! We got that wrong in the April issue, didn't we? The Car Boot Sale on May 14th will be in the grounds of St Elizabeth's Catholic Church on Lower Street, with car parking for visitors at the bottom of the next door lane. Access for booters from 8.30 and the public get in from 9.00. If you want to sell there, the cost is just a fiver for your car and the contact is Yvonne Colquitt on 07790 890 040.

Toilets on site and light refreshments will be available.

LUDLOW FLOWER FESTIVAL

Early notice of the Future Flower Festival, sponsored by McConnells, from July 9th to 15th, centred around St Laurence's church in the town centre, with support from other churches in the area. The idea is to celebrate all the positives that 2020 and 2021 realised.

You can expect very special floral displays, a community art exhibition and musical events every lunchtime. Live music at lunch time has a special appeal and they do it very well in Ludlow. Contact for the event is Sue Thornley on 01584 872292.

SILLY BIT

The nicest part about living in a small town is that when you don't know what you're doing, someone else always does.

Lisa Steward



The Oak Boy
TRADITIONAL OAK FRAMING
SINCE 2011
07398 233443

John Caswell
Johnjocaswell@yahoo.com

SERVICES AVAILABLE

<ul style="list-style-type: none">➤ Flooring➤ Manufacturing & fitting doors & windows➤ Kitchens ➤ Cladding➤ Studwork➤ Bespoke Oak Framing	<ul style="list-style-type: none">➤ Landscaping➤ Patios➤ Brick & Stone work ➤ Roofing, Tiling, Guttering➤ General Building➤ Property Maintenance
--	---

Call now for a Free Quotation!



CM BESPOKE CARE

**CareQuality
Commission
Registered**

SPIC
Shropshire Partners in Care

Personal, Nursing and Domestic care.
Tailored to your needs.

Call for a free consultation

**Tel: 01746 718816
Mobile: 07943834132**

www.cmbcare.co.uk
www.facebook.com/cmbcare
email: cmbbespokecare@btconnect.com



07971 361901 or 01299 832484

**Complete Bathroom Installations
Bathroom Refurbishment or Repairs
Wet Rooms
Professional Wall and Floor Tiling**



For a quality and guaranteed service, call Stuart for a free quote
Highly Recommended / References available - see my reviews on www.freeindex.co.uk

FOR THE BATHROOM YOU DESERVE!

TDC CARPENTRY SERVICES

Fully insured qualified professional
Excellent workmanship and quality customer care
From hanging doors, fitting kitchens to bespoke projects

Tim Clare - 07890 519980



Phoenix Environmental Ltd.
Contaminated Land Consulting and Contracting

Bringing 17 years of experience to bear, we provide straightforward advice help guide you through planning, or deal with your contaminated land, geotechnical and geo-environmental issues.

Phoenix Environmental offer both site and office-based services including:

- Regulatory Liaison and Planning Approval
- Phase 1 Desk Studies (Geology, Hydrogeology, Hydrology, History)
- Intrusive Investigation (Phase 2) Design and Application
- Trial Pitting, Cable Percussive Boreholes, Dynamic (Window) Sampling
- Flood Risk Advice
- Geotechnical Investigation/Advice, Foundation Advice
- Risk Assessment (GQRA/DQRA)
- Remediation Strategies/ Verification Reporting
- Environmental Audits/Site Audits
- Site Based engineering and supervision
- Drone Surveys/Media Production

We'll be there to guide you through every stage.
www.phoenixenviro.co.uk

Contact us: email. enquiries@phoenixenviro.co.uk Tel. 07800 646691



SPICE PRIZES



Wazim Kabir of The Spice Empire hands over the winners' vouchers to Alan Bullock, captain of the Seniors Section at Cleobury Mortimer Golf Club.

The Race to Dubai is a competition played by the world's top golfers in which they play a series of rounds with the top finishers competing in a final round in Dubai for big prize money. The Seniors section of Cleobury Mortimer Golf

Club thought it would be a good idea to have their own version of this to make a long wet winter more interesting. Wazim Kabir of the Spice Empire restaurant kindly offered to support the event and so the "Race to the Spice Empire" was born. Six rounds were played with points awarded according to players' finishing places, with the winner taking a £50 voucher and the runner up £30, to spend at either the Spice Empire or its sister restaurant, Gauthama in Cleobury.

Alan Bullock, captain of the Seniors section, accepted the vouchers from Wazim on behalf of the winners Rob Pinner and Yoshi Oyama.

We are very grateful to Wazim for his support and sponsorship of the event..

BROOME PARK B&B

Catherine and John Evans' very highly rated B&B is in the awards again. In March

they won the Silver Award as the second best B&B in the West Midlands.

Organisers Visit England Awards for Excellence wrote to tell them: "We're delighted to inform you that as a local awards winner you have been entered into the national Visit England Awards for Excellence 2022 competition." That's on June 8th in Birmingham Library and let's all keep our fingers crossed for this quite outstanding local business.

THE MEN'S SHED

Until the Shed itself is open, there's an informal arrangement to meet at the Communal Hub on Lower Street from 2.30 to about 4.00 on Fridays for those who want to have a chat and a cuppa with others involved. Find out more about it, or just enjoy a brew and a chat with others. It is an informal flexible meet up where any one can pop in and out anytime.

Peter Blackburn

Flowers By Fiona *est 1991*

**Fresh Flowers made to order
Special Occasions**

**Weddings, Anniversaries, Birthdays
Sympathy Tributes**

**19a High Street,
Cleobury Mortimer**

Tel: 01299 272 995

Professional. Affordable. Local.



Electrical Installations

No matter the size, we can gladly undertake all Domestic, Commercial and Industrial installations you require.

A family run business, with over 25 years industry experience.

From period properties to agricultural solutions, we provide a professional service every time. We also do call outs and emergency work.

Renewable Energy

Protect yourself from rising energy bills by considering renewable energy.

Solar PV is the most accessible way you can save energy by producing electricity from the sun. Earn a tax free income from the electricity your system produces.

Speak to us about how renewable energy can benefit you or your business.

Whatever your query, give us a call.

T: 07971 096267 / 08450 564173

W: www.awe-services.co.uk

Two Staks, Eagle Lane, Cleobury Mortimer, Worcs. DY14 8RA



KUDOS BLENDS WIN MAJOR BAKING INDUSTRY AWARD



Kudos MD Dinnie Jordan holds the trophy as the team accept the applause of the industry audience. Kudos Blends has been named WINNER of the 'Ingredients Manufacturing Company of the Year' at the Food Manufacture Excellence Awards 2022, in London.

This awards programme celebrates the UK food and drink manufacturing market's innovative approach to food development, high-tech manufacturing, and high-quality raw materials, providing a platform to celebrate and recognise this hard work and the boundaries pushed forwards in the past 12 months.

Dinnie Jordan, MD and Founder of Kudos Blends, said; "As a global supplier of leavening agents to the bakery industry, we're delighted to win this award in recognition of the quality and excellence of our range of products, especially as our goal is to help our customers deliver healthier and perfectly baked goods.

With our team of in-house chemists and bakery experts, and our patented leavening technology, we have worked closely with our customers to develop innovative solutions to some of their most pressing challenges, ranging from increasing shelf life, to reducing waste, to removing sodium, phosphate, and aluminium.

This award is acknowledgement for all that ground-breaking work we've been undertaking over the past 12 months and is confirmation that we're living our mission to revolutionise the industry by challenging the status quo. I couldn't be prouder."

SWIFT WATCH

Swifts should be on their way across Europe from Africa. They usually arrive in the first week in May and are with us for June and July before they head off again on the four thousand mile round trip back to winter in Africa. Despite adverse weather, storms, cold and wind, we have been very fortunate to be able to host around 12-14 breeding pairs of swifts breeding in our taller buildings in the town and have been entertained by their ariel antics for the three months. Let's hope they can continue to do so . *Kit Smith*



The Well Being

Holistic Therapies

Cleobury Mortimer DY14 8AS

www.thewellbeing.co.uk

April Boardman

Reiki Master ITEC MFHT Dip Hyp

Do you have aches & pains, ongoing health issues or just need to relax? Help is at hand!


**Deep Tissue & Remedial Massage
Reiki & Crystal Healing**

**Hot Stone Massage-Aromatherapy- Reflexology
Pregnancy Massage & Hypnotherapy**

20% off your 1st treatment!

Tel 01299 513148 or 07881494036 or Book Online!

People when thinking of having Home Care often ask who are your staff? What sort of company are they?

TLC are a family run care provider supporting people with Disabilities, Dementia, Aging Population and Acquired Brain Injury to remain living at home for as long as it is safe to do so. Clients when considering home care will often find it difficult to accept and wonder about who are the staff and what qualifications they have? I cannot speak for other companies, however in our company it is made up from many sectors of our society and when these are put together, we have an Outstanding Team. 

One of those sectors are the future NHS professional, we have Daisy who is in her last year of her training to be a midwife, Lucy who is working towards the end of her training to be a Physiotherapist. Christina and Aila about to start their journey into nursing. We have further staff who have just been accepted into the NHS. These lovely kind young adults not only study many hours both in university, on hospital wards, they also give to us and have helped us support our clients for many years! Most joined us while still at college.

TLC have ex-nurses that come to us after raising their family and some, in recent times have re-joined their colleagues in the NHS.

We have staff who have raised their kids and now want a career, TLC will train or retrain people to help people reach their full potential and become one of our Outstanding Team.

We encourage kind caring and honest people of all ages and backgrounds who want to make a difference to people's lives to join our team. TLC invest heavily in people with ongoing support and training to help our new colleagues achieve their goals and reach their full potential. Once initial training is complete and they have been assessed as competent, TLC Induction Manager and our Training Manager will support staff through to achieve their Level 2/3 in H&S Care

Our Training

TLC's Training Team offers full free training on site and support staff through their Care Certificate. We have strong connection with an outside Training Provision who help our staff to achieve their Level 2/3 in H&S Care. Currently we have 32 members of staff that have already achieved Level 2/3 in Health and Social Care. We have qualifications at level 4 and five of our Senior Managers have Level 5. All staff that are new to care are required to achieve Level 2 within the first two years of their employment.

Contact us

For further enquiries please regarding Care or employment please ring TLC Care at Home 01299 272897 for an informal chat. Visit www.tlccareathome.com or wecare@tlc-careathome.co.uk

*Unlock your Potential.
Success starts here!*

COVID-19 Update

All our staff are provided with full PPE's including Gloves, Full Aprons, Sleeves, Visors, Gloves Surgical Masks.

Video training on Donning and Doffing PPE's sent out regularly.

Staff sign health declarations daily, Staff have weekly Covid-19 test. Most of our staff have now been vaccinated against Covid-19. TLC work closely with government regulation and update our risks assessment accordingly.

CYCLING SPORTIVE

Guy Turpin and Rich Robertshaw are leading a fund raising Twisted Spire Cycling Sportive on Sunday, May 29th. They'll start from Cleobury Teme Leisure at 9.00 and there are two routes to chose from. Both take in the great scenery you'll find in Shropshire, Worcestershire, and Herefordshire, including the Teme Valley.

If riders choose the 30 mile route, they pay £25.00 and for the really serious 55 mile route it's £30.00. All monies raised go to ASTriiD, a charity offering an on-line match-making service for highly skilled members living with long term and chronic illnesses and finding flexible employment or voluntary opportunities. It's a great concept, using skills too often overlooked and under utilised.

The routes will be clearly signed and marshalled with insurance in place. There will also be medical support and a roving mechanic to help with cycle problems. There will be feed stations and at the end of the ride at the Sports and Social Club there will be a hot meal, a goody bag and a bottle sponsor Hobson's Twisted Spire Ale.

It sounds like a great event and for more details you can contact Rich Robertshaw on

07962 428 418 or email him on rich_robertshaw@live.co.uk, or talk to Guy Turpin on 07779 427 814 or email him on guy@sunlab.co.uk

THE SEVERN HOSPICE SHOP

The Severn Hospice charity shop in Cleobury is at the heart of the community. It has just celebrated its 12th anniversary and is one of the charity's most successful shops – in the past 12 months it has brought in more than £100,000 of much needed funds thanks to the incredible generosity of its supporters.

Known as the town's 'department store' the shop, the only charity shop in the town, sells everything you can imagine, all donated from the local community.

Manager Victoria Holland said: "It really is down to our supporters and volunteers that the shop is such a success. Our clothing area is great as is the homewares section and we have had some remarkably interesting donations over the years, including a model galleon and a machine for smoking fish.

"The shop is stocked solely with donations from the local community and to have their support is fantastic. Every day is different here: we have 30

volunteers and along with the staff they make it fun."

Victoria has been manager for six months, having previously been assistant manager of the Severn Hospice shop in Bridgnorth.

"I moved here last October and the welcome and support I have received has been wonderful. I love working here in Cleobury and working for Severn Hospice.

"I am proud that the shop is so popular and has such great support. It is down to the volunteers and staff that the local community want to support us. I am incredibly grateful to everyone."

Severn Hospice has a network of 29 shops across the region and was named Charity Retailer of the Year for 2021 in a national award. Each year, the charity cared for 3,000 families in Shropshire, Telford & Wrekin and Mid Wales, living with incurable illness.

SILLY BIT

I'm glad I learned about parallelograms at college instead of how to do my taxes. It comes in so handy during the parallelogram season.

Suzanne France

Charlton Interiors

UPHOLSTERY & INTERIORS

Rosemary Jones

Mob: 07837 609229

Phone: 01584 861823

Email: info@charltoninteriors.com

www.charltoninteriors.com



BESPOKE YOGA TUITION



Relax Breathe Stretch Tone

One to one Yoga lessons

BWY trained teacher with over 15 years experience

Can travel to your home

Angela Kazimierczuk

07870 506655

CLEOBURY MORTIMER PARISH HALL.

The largest hall in the area.

We are open again so would you like to celebrate an event, party, wedding, or just a get together?

We are able to cater for small or large parties, sit down dinner parties for up to 100 people with or without a bar.

Come and have a look at what we can offer.

To book call Janet on 01299 271070.

'FLICKS IN THE STICKS'

7.30 Saturday May 21st

Kenneth Branagh's masterpiece: "BELFAST"

Widely acclaimed period history, with Jude Hill winning an Oscar for Best Newcomer.

Licensed Bar. Admission £4.00

THE TOWN'S BEST VALUE VENUE

Do you know a 2, 3 or 4 year old who would like to join our fantastic nursery?



Stottesdon Gateway NURSERY

We really care and make learning fun

We can offer:

A safe and nurturing learning environment with dedicated and caring staff.

High quality provision with strong links to Reception.

An amazing outdoor area and use of the school facilities and space.

- ✓ Nursery places for 2, 3, 4 year olds, available from September 2021
- ✓ From 15 - 30 funded hours available.
- ✓ BEFORE & AFTER SCHOOL & HOLIDAY PROVISION for children aged 2 - 11 years old.

TO BOOK A TOUR :

Stottesdon C of E Primary School

Stottesdon

Shropshire

DY14 8UE

TEL: 01746 718617

Nursery and Wrap-around sessions (term-time)		Fees
Early Start	7:30am - 8:00am	£4.00
Breakfast Club	8:00am - 8:45/9:00am	£4.00
Morning Session	9:00am - 11:30am	£10.00
Lunch club	11:30am - 12:30pm	£4.00
Afternoon Session	12:30am - 3:00pm	£10.00
After School Club	3:00pm - 5:30pm	£10.00

HORTICULTURAL SOCIETY

We met in April to hear Rosemary Winnall talk on the Power of Plants. Rosemary is co-editor of the wonderful "The Nature of Wyre".

Using analogies and old wives tales, Rosemary illustrated how these became the stuff of folklore and still colour our conversation; phrases like 'sturdy as an oak'. The dock leaf or goosegrass to treat nettle stings and the claim to fame of the oak gall which produced black ink to sign the Magna Carta.

We considered herbal preparations as medicines, such as rosehips for colds and chest treatments; poisons are part of this group, and the ladies who used their herbal knowledge to treat the sick did run the risk of accusations of witchcraft.

Today science has taken botanic plants and isolated their active ingredients

giving us dose and duration control. The refinement of digitalis from foxglove and aspirin from Salix has been known for some time, and we now have a cancer treatment from yew. We hybridise and cross fertilise to increase vigour and yield and we have modern Industries which tap tree plantations for palm oil and latex for rubber.

Ingenuity has enabled us to manipulate plants. Our use of natural fibres like cotton and linen has led to the development of weaving, knitting and embroidery techniques, and the use of natural dyes for decoration.

Linda Ashman

'A CENTURY OF FLOWERS'

The flower arrangers of St Mary's Church will be organising a Jubilee flower festival called "A Century in Flowers" from June 2nd onwards from Thursday to Sunday the 5th.

It will contain two arrangements of important

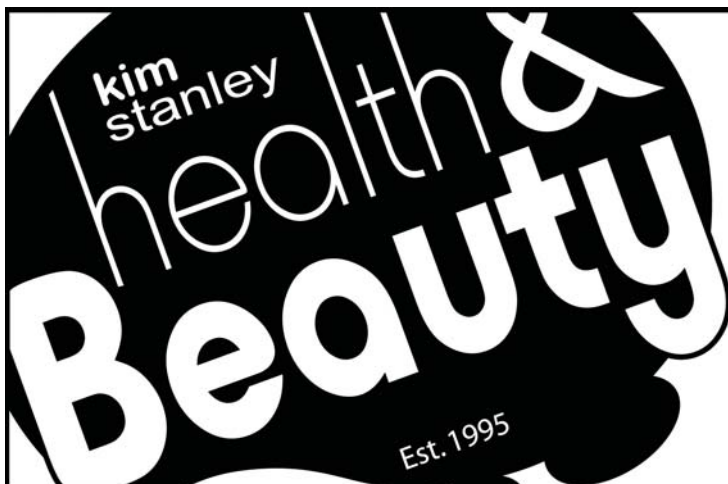
occasions from every decade from 1922 to 2022 with special items during HM the Queen's lifetime. Tea and cakes will be available during those days in church.

Angela Drennan

FLICKS IN THE STICKS

Written and directed by Kenneth Branagh, BELFAST is a movie straight from Branagh's own experience. A nine-year-old boy must chart a path towards adulthood through a world that has suddenly turned upside down. His stable and loving community and everything he thought he understood about life is changed forever but joy, laughter, music and the formative magic of the movies remain. Eleven year-old Jude Hill won an Oscar as Best Newcomer for his role and the movie also stars Judi Dench, Ciaran Hinds, Jamie Dornan and Catriona Balfe. Saturday May 21st at 7.30pm in the Parish Hall.

Robert Hodge



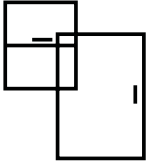
Kim Stanley
30, High Street
Cleobury Mortimer
Shropshire
DY14 8DQ



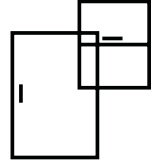
Tel. 01299 271800

www.kimstanley.co.uk





Ashley Bannister Windows & Doors



- UPVC Windows & Doors
- Composite Doors
- Porches & Conservatories
- Glass Unit Replacement
- Fascia, Soffit & Guttering
- Handles & Letterboxes
- Hinges & Window Restrictors



No Job Too Big or Small
Certass Approved Installer
Local Tradesman Based in Highley

ashban94@hotmail.com
Ash: 07817 785245



Twit - Twoo Falconry

- **Static and flying displays with owls & falcons**
- **Fetes and fayres**
- **3 hour bird experiences based in clows top**
- **Garden parties and birthdays**
- **1-2 hour talks for indoor hall and outdoor visits**



**For quotes and bookings ring Steve Woodison 07738014884 or
Email scw1960@hotmail.co.uk**

MIKE AND SHELLEY ROBERTS

Haulage Contractors

Supplier of Aggregate and Asphalt products

12 Lacon Close, Cleobury Mortimer DY14 8EF

07860 669350

07966 045012

Clarion Clippings - The Local News

CLEOBURY W.I.

Cleobury WI is thriving, with new members joining us. We have a full programme of meetings for the year, with a varied range of talks and activities. In addition, we continue to enjoy getting together for regular walks and coffee mornings.

In April, Amy Bottoms introduced the art of quilling, demonstrating how it is possible to make intricate shapes and patterns from simple paper strips and glue. The only specialist piece of equipment needed is a small quilling tool. Amy provided the materials for us to practise the technique, before encouraging us to get creative with our own designs. It was good fun, but everyone agreed not as easy as it looks.

Planning is ongoing for special future events during this, our centenary year. Members have been invited to help with the design of a commemorative garden to be created in front of St Mary's Church. And members will contribute to making a centenary tablecloth during weekly craft sessions, or at home.

On May 10th we will be welcoming Alison Wall for a

presentation on Tai Chi, learning some gentle movements to help calm and connect the mind and body. In the Market Hall at 7.30 pm. Visitors are welcome to join us by paying £5 to include tea or coffee and biscuits/cake.

For further information or to join WI, contact Clare 01299 271905 or Judy 01299 270983
o r e m a i l
judysant10@gmail.com

Val Sniadowski

THE PARISH HALL

The Parish Hall is at the centre of the community and is very well used; it relies heavily on the work and effort of a small group of volunteers.

We are holding our Annual General Meeting at 7.30pm on Wednesday May 18th and invite you to come along to hear what we do – and how you could play an important part in the life of our town and help keep our hall safe and fit for all to use and enjoy. We need your support, with ideas and suggestions – you might even think about joining the committee. Cheese and wine will be served, always a good excuse for turning up.

Gabby Franklin

A TOUCH OF ROMANCE

This message came in recently and hit the spot for the editor's liking for romance:

"My best friend and I have read your newspaper with great interest for the last 8 months or so ever since we learned about it on Twitter. Neither one of us is from the UK, he is American and I am German but reading the Clarion together has been a very fun pastime activity we can do together over the internet in times where a global pandemic keeps us from meeting in person. Cleobury is a little bit like a place out of a book for us but a place that maybe one day we'll get to visit.

His birthday is coming up in May and I would love to gift him something fun and meaningful. Would it be possible to take out a personal ad in the Clarion?
Sarah Kay"

Who could resist such a request that brings together two people so far apart from one another? Happy to oblige Sarah, and hope you make it here one day. Drinks on me.

SEE BELOW

Jim Reynolds





Find Your Smile at Cleobury Dental Practice

Whether you're looking for dental implants to replace missing teeth, invisible braces for a straighter smile, boosting your confidence with teeth whitening or a dedicated dentist for your regular care, you can find it all here in the heart of historic Cleobury Mortimer.

- Modern, state of the art facilities and the latest dental technology
- Free car parking adjacent to the practice and step-free access to our dentists' surgeries
- Enjoy private dental care from just 47p per day with our membership plans
- Highly experienced in helping those with dental phobias

Services Provided

- Tooth-Coloured (White) Fillings
- Sedation for Anxious Patients
- Teeth Straightening with Braces and Invisalign
- Dental Implants (Replacement of Missing Teeth)
- Emergency Appointments Slots Available (first come first served)
- Hygienist Services
- Private and NHS Care (NHS subject to capacity)

Opening Hours

Mon, Tue, Wed and Fri **9am-5pm**
Thu **9am-7pm**
Saturdays **by appointment only**

Tel: 01299 271 747

www.cleoburydental.co.uk

BDA Good Practice
Member

 **invisalign**
PROVIDER

**CLOWS TOP
VICTORY HALL**

April started with a concert by Bill Lennon; all proceeds donated to the 'Raise the Roof' Appeal. The replacement of the roof is aimed to complete in mid May.

The A G M is at 7.30pm on May 16th and will give a chance to view the new roof.. Nominations for new committee should be forwarded to the Committee via CTVH Mobile or e mail.

To book the Hall, please ring the CTVH Mobile 07379 959895, visit Clows Top Victory Hall Facebook page or e-mail contact@clowstopvictoryhall.co.uk *Nigel Caldicott*

CREATIVE WRITING

'Wonder' was the focus for our April gathering, which produced praise for the wonders of nature that we all enjoy in this lovely corner of England. Marian broke away to tell of a sleepless night and the sad awareness that brought of others unable to sleep under a bombardment in a Ukraine cellar.

For this month we have a wide potential with the word 'Crime'. That should stretch some of the imaginations

when we meet in the library at 6.30 on May 9th

**NEARLY DEAD
POETS SOCIETY**

David Walford had chosen 'Orange' as our poetic subject for March, being a difficult word to find a rhyme for. So he opened proceedings with two fine works but no real match. Tony Smith wandered from the subject and had us laughing and Steve did likewise before the editor revealed an old chum Roger Gorringe - a rhyme at last!

Tony read us his epic Gornal Gourmet Evening, which was enough to put you off drinking and Steve presented a touching piece by an old friend clearly not well. Tears and laughter - quite an achievement. We'll try to laugh over 'Happiness' when we meet on April 25th.

**HORTICULTURAL
SOCIETY**

Things are looking up for the Spring season! We have a members-only visit to Henley Hall at Ludlow on May 6th. Meet at the Talbot Car Park in time for departure at 1.30.

To follow that, we have a visit to Westonbury Water Gardens at Pembridge on

May 21st. Again, depart from the Talbot car park at 1.30.

Finally, we would like to remind all keen gardeners that on May 14th we hold our annual Plant Sale at the Market Hall at 9.30. Part of the monies raised will be donated to the fund for the annual Lime Pleaching of the trees on High Street. *Linda Ashman*

ALISON OSBORNE

A lovely lady, who worked so hard as attendance officer at local schools with a firm but gentle touch and cooked such splendid meals with a variety of courses on just a domestic oven, passed away on April 3rd. She and Peter were two of the best hosts in the area, with a touch of humour that made crowded evenings at The Yett truly memorable. They are together again, probably in charge of hospitality to help Saint Peter at the gates of Heaven.

Her funeral will be held at Wyre Forest crematorium at 12.30 on May 9th, with a family request for no black dress and no flowers. She would want to be remembered as a friend who made people smile, not one to darken her departure with mourning. Donations if you wish to the Air Ambulance.

Firewood

Seasoned logs, barn dried & ready to burn.

Free local delivery -01584 890993 or 07970878224

Various size loads available



Paul Harding Tree Services



John Brazier & Co

Accountants & Business Advisors

Accounts – Company, Partnership and Sole Trader
Tax Returns – Corporation Tax and Personal
VAT - Returns and advice
Payroll Service including RTI

For a personal and
professional service

Contact John Brazier or Sarah Morgan to discuss your requirements on 01299 271473 or email at info@johnbrazierco.co.uk. Alternatively, you can arrange a meeting at 53, High Street, Cleobury Mortimer, Worcestershire DY14 8DQ

01299 271 473



Bumperscuff Rescue

● Body Shop excellence ● Home convenience

Cost effective car body repairs!

- Bumper scuffs
- Kerbed alloy wheels
- Paint scratches
- Small dents

Free no obligation quotes, all work fully guaranteed Call **Andy Taylor** now on **07834 322216** or visit www.bumperscuffrescue.co.uk

CLEOBURY MORTIMER CARPETS

Supplying and Fitting of:-

- Carpets
- Natural floorings (Cair, Sisal & Seagrass)
- Vinyls

Carpets supplied by: Victoria Carpets, Fibre Flooring
& Alternative Flooring at Unbeatable Prices

Contact Details:-

Address: 26 High Street
Cleobury Mortimer •DY14 8BY
Telephone: H: 01299 270095
M: 07739 186163
Email: garethleach@aol.com
or check out our new website
www.cleoburymortimercarpets.co.uk

INFINITE ELECTRICAL SOLUTIONS

For all your electrical needs:

House rewires

Fuse board upgrades

Electric showers

Need an extra socket or light installed?

No job too small

For a FREE quote

Call Lloyd 01584 811184



GROUPS JOIN UP

The Stroke Support and Carers groups are now meeting together on the 4th Tuesday of each month at St. Mary's Place. Our next meeting is at 1pm on May 24th when we are promised a light hearted music quiz along with tea and a piece of cake. If you care for somebody and would appreciate a couple of hours social time with other carers or if you have had a stroke and would like the companionship, then please do join us.

We are planning social activities in the coming months but we always leave room for members to share experiences and learn from each other. We are supported by Katja Jones from the Medical Centre and Michele Lee from Shropshire Social Services with local volunteers – more volunteers are most welcome to come and share the load of planning/organising our programme.

If you want to know more or would like to join us please contact Katja on 01299 270209 or email cleoburycoco@hotmail.com or Michele at

michele.lee.carers@shropshire.gov.uk

Graham Simpson

FROM THE BANDROOM

Our first performance of the year was on a very sunny Easter Saturday at Stevens Park, Quarry Bank. We were able to air some of the pieces that we shall play at our concert on May 14th in the Parish Hall, tickets at £10 per person are still available from Amanda Wilcox on 01584 891199 or any band member.

This concert will have something to please everyone, from Bond to Mission Impossible. Please join us for some popcorn and sit back to enjoy 'Music from the Movies'

Moving into June, the Band are in demand, playing for Jubilee celebrations in both Cleobury and Abberley, we are pleased to be playing for a local wedding and a couple of fetes, how nice to be back!

We are looking for a couple of bass players and also a bass trombone player to complete our line up. We practise at the Parish Hall on Tuesday evenings from 7.30pm.

Please do get in touch with Amanda if you would like a Brass Band to perform at your event.

Katie Griffiths

READING GROUP

Bonkers, said one of our readers. Yes, totally bizarre our latest book, 'The Eyre Affair' by Jasper Fforde. Good to have something we probably wouldn't have picked from the shelves. You need to be prepared to suspend belief when reading this light hearted tale of fantasy bur what a joy to have a book which makes you laugh out loud in places. One or two of the group either gave up on the read or just didn't like the idea of the book. The rest of us enjoyed the unusual names of the characters, the literary quips and even the puns. The author obviously has a vast and vivid imagination plus the talent to put it all in a novel. The next read, probably more sedate, is The Miniaturist by Jessie Burton, set in 1686 Amsterdam. We gather at the library on May 16th to exchange views.

Deana Kimber. 271754



Grainger Jones your local financial adviser

Grainger lives in Cleobury Mortimer giving the residents and surrounding areas a dependable financial planning service.

- Wealth Management
- Retirement Planning
- Investments & Savings
- Family & Business Protection

An initial consultation is available at no charge

To book an appointment or just have a chat, please contact Grainger below.

tel: 07974 100089

email: grainger@meridenfp.co.uk

website: www.meridenfp.co.uk

CARTER'S ANTIQUES



We are looking to purchase all manner of antiques, jewellery, coins, medals and curiosities.

For a free valuations kindly telephone
John Carter: 07779 311792
 Or email: johnbarney743@gmail.com

SINGING LESSONS

Professional singer and experienced teacher recently moved to this area
 Vacancies available

All styles, ages, standards welcome
 Contact Angela Kazimierczuk on
 07870 506655



Natalie Taylor Dip CFHP MPS Pract.

Specialist Foot Health Practitioner

Specialising in:-

- In-growing toenails
- Fungal infections
- Nail trimming
- Verrucae
- Calluses
- Corns

All from the comfort of your own home.

If you would like to make an appointment, please call on **07779 113982** or **01584 890112**



COUNTRY SKILLS

CPCS/NPTC Approved—fully insured

- Outside Renovation
- Tree Surgery, Hard Landscaping
- Slabbing and Fencing
- Decking, Roofing
- Contract Mowing

Call for a free quotation

R. Price & Sons

Mobile: 07967 140720 Email: roger@country-skills.co.uk

Painter/Decorator Christine Smith

Friendly, local, female professional. Any job considered: including Indoor/outdoor, walls, windows and doors, wallpaper & preparation. DBS checked. Fairly priced. Free quotes.

Call: 07977296335

E: clsartcontact@gmail.com



Precious Memories

Funeral Celebrant - Carole Clayton

07971 543790— 07942 774560

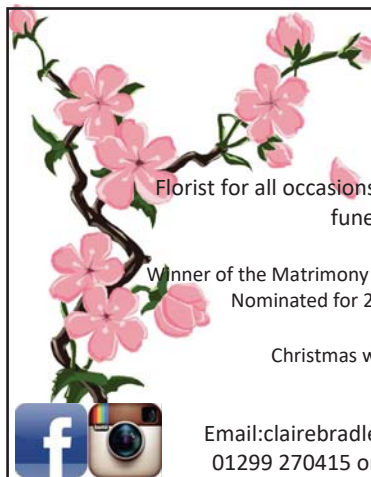
South Shropshire—North Herefordshire—North Worcestershire

Celebrant@hoskingsfuneralsdirect.co.uk

www.hoskingsfuneralsdirect.co.uk/celebrant

FB: @preciousmemoriescelebrant

Everyone has a story to tell—I'd be honoured to be the one to tell the story of your Loved One.



Claire Bradley
Floral Designs

Florist for all occasions, specialising in wedding and funeral flowers

Winner of the Matrimony Award 2020 Best Wedding Florist
 Nominated for 2021 Matrimony Awards

Christmas workshops available



Email: clairebradley1@icloud.com
 01299 270415 or 07980 580770



Domestic oil-fired boiler breakdown & maintenance services.

27 years' field-service experience with leading UK boiler manufacturer Worcester Bosch.

Donovan Taylor

Tel: 01299 828670 or 07807 837040

donovan.taylor@sky.com

www.greenstar-boiler-repairs.com

Caring about your environment and providing an honest, professional & reliable service you can trust

Stepping Out! Who's Walking, When and Where.

ROCK PATHFINDERS

This month's walks, offering a friendly stroll through local countryside. Everyone welcome, but no dogs allowed

Thursday, May 5th:
10.00am start from the Button Oak Inn at Button Oak, near Bewdley DY12 3AQ

May 19th. 10.00am start from the Cat Inn, Bridgnorth Road, Enville, Stourbridge DY7 5HA.

Information at www.rockpathfinders.uk, or phone Alan on 01299 400304

THE FOOTPATH ASSOCIATION

Work on the footpaths continued despite the unpredictable weather April often brings. A new dog gate along with repairs to a stile and nearby bridge were completed last month. The work was made easier thanks to the land owner who had already strengthened a very wobbly stile. Susan Sharp, the footpath officer for CMFA, has reported that in the last

few years, the footpaths of Neen Sollars and Milson have been transformed. The parish council has been the driving force assisted by ourselves together with the co-operation and help of landowners. Nearly all stiles have been, or shortly will be, replaced with gates and the remainder have nearby opening gates or dog gates.

The Parish Walk on April 3rd was our traditional Daffodil Walk and we were not disappointed. The route followed the CMFA leaflet No 18 "Rea Valley Amble". A 4.5 mile circular walk north of Cleobury alongside the River Rea. The track to Musbatch had an extensive display and another on the opposite bank further upstream. We crossed the river on the footbridge below Reaside returning via Chilton and Neen Savage. The weather was fine and the paths firm underfoot, a perfect walking day.

On Sunday 5th June as part of the Cleobury Festival the Parish Walk is based on CMFA Walk 21 "Dinmore Dally". It will start from outside St Mary's Church at

10.00 am. The route, of about five miles, will be via the Golf Club, then loop round to Neen Savage and back to Cleobury. There are a few stiles. Wear stout footwear and be prepared for changeable weather. Our Parish Walks are free with no prior notice required. Just turn up and enjoy a few hours in our local countryside.

Walking for Health on May 11th is the first 'Awayday' of the year. We will be going to Cleobury Golf Club so please meet at the Social Club car park in time for a 10.00 am start. Transport is provided if required and refreshments will be available at the Golf Club. The walk on May 25th will start at 10.00 outside the Market Hall as usual. Walking for Health continues to be popular with over 20 people meeting to walk and socialise.

Veronica Hargreaves

SILLY BIT

When you're dead you don't feel anything and nobody notices except other people. The same thing applies when you're stupid.

Suzanne France



WINDSOR PRICE REPAIR SHOP
Automotive

Email: mikeytwonames@icloud.com
Tel: 07468 521816

Unit 1, Hillocks Farm,
Cleobury Mortimer, DY14 0EB.

 MOT	 Brakes	 Diagnostic
 Services	 Cam Belts	 Exhausts
 Repairs	 Clutches	 Tyres

Mark Pearce

Landscape, Design and Rustic Garden Furniture

- Fencing
- Patios
- Drives
- Decking
- Garden Sheds
- Summer Houses
- Fence Panels
- Log Stores



And Much More

Top Quality Fully Treated Timber Products

Mobile: 07875425028

Tel: 01746718404

Robert Bradley Logs

07794 798616



*Seasoned Firewood, Hardwood,
Softwood or Mixed loads of logs.
Free Local Delivery*



Fresh milk and cream from
Cleobury Mortimer

www.mawleytownfarm.co.uk

01299 270359



SKELLERNS

DOORS & WINDOWS



- UPVC Fascias & Guttering
- UPVC Windows, Doors & Conservatories
- General Home Improvements
- Re-roofing & general building work
- Replacement Glass
- Patio Jet Washing



Free No-Obligation quote. FENSA registered company with years of experience

Call Mike on: 01886 812250 or mobile: 07814 577739

www.skellersndoorsandwindows.co.uk



It's a bit late in the year to be talking about winter visitors but some of ours don't seem to want to leave. Last month we saw a small flock of Bramblings under the garden bird feeders on several occasions, clearing up the spillage from the Great and Blue Tits, Great Spotted Woodpeckers and Nuthatches. They like to feed in beech woodlands from September to March or April, but when the beech mast is finished (and the area of beech trees in the Wyre Forest is pretty limited) they visit nearby fields to eat weed seeds and grain. Sometimes they join flocks of Chaffinches, which is very confusing as they look alike. The individual in the photo seemed to have missed her flight home to the breeding grounds of the Scandinavian birch woods, and hung about the farm for a bit longer. Perhaps she was looking for a Place in the Sun.



In the last few weeks we have also had visits from a 'pair' of Mandarin Ducks. (I write 'pair' because the lady was definitely a Mallard). Mandarins are interesting: although they are native to the far-east they have made themselves at home in the British Isles and large numbers can be seen

on the Severn during the winter, particularly near Trimply Reservoir. They have a diet very similar to the Brambling and, rather surprisingly, can perch in trees and like to nest in large tree holes. We discovered this fact when our only old apple tree at Unclyls was chosen as a nest site in 2008. We watched fascinated as they came and went, building the nest, and wondered how the ducklings would negotiate the ascent of the hollow trunk to reach water. Maybe the mother realised her mistake – at any rate the nest was abandoned.

I've been reading 'Wilding' by Isabella Tree: the story of the re-wilding of the Knepp Estate in Sussex. One of their earliest success stories was of the Turtle Dove. Threatened with extinction in Britain, the estate saw numbers of singing males rise from one or two in 2001 to 16 by 2017. I had to resort to the RSPB website to find out what a Turtle Dove would sound like, but its throaty, purring call would have been a common sound in the Wyre Forest up until the mid-seventies when numbers here and in the rest of the nation went into a steep decline. They used to be found in tall scrub and young plantations, often nesting in older conifers, and feed in weedy arable fields. Now that grain harvests are followed so quickly by winter crops there is little quantity or time for the birds to feed or raise second broods and they are almost literally squeezed out. (Thanks to 'The Nature of Wyre' for this information). What would it take for our forest, the Wyre Forest National Nature Reserve, to see the Turtle Dove return?

Linda Iles

BILL'S QUALITY METALWORK
5 GREENFIELD ROAD, CRAVEN ARMS, SY7 9QU
Manufacturing Made to Measure Gates and Railings
~Balconies and Staircases, Handrails, Carports,
Structural Steelwork and Mobile Welding Service.
Phone Bill on 07973 248 016 or 01588 673 914
Office for a free quote



BAGGINSWOOD
 Bagginswood, Cleobury Mortimer,
 Nr. Kidderminster, Worcs. DY14 8NB
 Telephone: 01746 718732

Heath Farm Meats, Bagginswood

Opening Hours

Wed 8am to 5.30pm, Thurs 8am to 7pm, Fri 8am to 5.30pm, Sat 8am to 12.30pm

Straight from Our Farm to Table

We rear & sell all our own beef, pork, lamb & mutton through our shop on farm.
 We also make our own flavoured sausages, burgers, home cured bacon,
 gammon etc. No order to large or small.

Hams ● All Poultry ● Honey ● Mawley Milk & Cream ● Ashley's Cakes & Bread ●
 Jams ● Eggs ● Cheeses ● Apple Juice ● Potatoes ● Meat Pies ● Sticks & Logs

Telephone 01746 718732 with your order to arrange a date & time for collection



Electrical & Security

Tel: 07973 112463 (Anytime)

01299 489223



- | | | |
|----------------------------|---------------------------------|----------------------------------|
| • Full/ Part Installations | • Landlords & Electrical Safety | |
| • Existing System Updates | • Certification | Part P + Full Scope Registration |
| • Alarm & Security Systems | • Upgrades | |
| • PAT Testing | • Free Callouts and Quotes | Card Payments Accepted |
| • Domestic and Commercial | • For Existing and New | |
| • Properties | • Installations and Security. | |
| • Electrical Problems | | |



Fast Friendly Service, No Job Too Small



FOR ALL YOUR ACCOUNTANCY REQUIREMENTS

www.fairway-accountants.co.uk

Head Office: 01299 822283
team@fairway-net.co.uk

Simon Hector: 07896 439594
sjh@fairway-net.co.uk



Philip Dunne's Letter from Westminster

I know there has been considerable concern locally about delays to ambulance responses to emergency calls from South Shropshire. I assure you I am also very anxious about ambulance response times.

West Midlands Ambulance Service do acknowledge ambulance response times are not at all near to where they need to be for Shropshire. From their own statistics, which I have requested and seen, the reason behind this is clear - the issue has been exacerbated by long delays to handovers at hospital, which prevents crews from getting back out on the road.

This has been building since last July when many covid restrictions were lifted. I have been engaging with WMAS and NHS leaders in Shropshire since then, and have met WMAS senior leaders to discuss response times across South Shropshire. I have also raised cases where constituents have suffered delays for ambulances (mostly in non life-threatening emergencies, it must be stressed).

Following my conversations with the WMAS Chief Executive, I am calling on Shropshire CCG for support to recruit and train more ambulance crews, so we can put more ambulances on the road in Shropshire, while patients wait to be handed over at hospitals. I am also engaging with our acute hospitals, to ensure they do all they can to speed up handovers, to return as soon as possible to the efficiency they have managed previously.

I know they move directly from call to call, with around half of their attendances in Shropshire currently leading to conveyance of a patient to hospital. Crews start and end their day in an ambulance hub to collect and return their vehicle, but are otherwise on the road attending

calls. So a return to localised hubs won't fix this issue. I am also working with WMAS to encourage more community first responders.

Community First Responders act as a rapid first point of contact in emergencies, before an ambulance can arrive. They are trained to provide basic lifesaving care, and work as volunteers in the community around their schedules. In incidences of cardiac arrest, CFRs and members of the public trained in CPR and the use of the defibrillators can be the difference between life and death, particularly in rural locations, as after a cardiac arrest, for every minute that no-one is doing CPR, the chance of survival drops by 10%.

When I spoke to the Chief Executive of WMAS in March, I raised my concern that there were no live adverts to recruit Community First Responders in the West Midlands. He put this right rapidly, and applications for the next course went live the next day. If you or anyone you know are interested, please visit www.jobs.nhs.uk and search for "WMAS".

I also suggested a programme of engagement by WMAS with the public in South Shropshire. WMAS arranged for staff to be on hand at Ludlow Market Square on Saturday 23rd April, to exhibit their vehicles and answer questions from the public about the process of joining as a Community First Responder. I was really pleased with the response from WMAS and the public, so will be looking to repeat this pilot in other towns in South Shropshire.

I shall continue to work with WMAS and SaTH to do all I can to see ambulance response times improve in South Shropshire.

Philip Dunne



COACH HOLIDAYS & DAY TRIPS

Discover your next holiday by coach! Book with Whittles Coaches, established for over 95 years and based in Kidderminster. Whittles Holidays include:

- ✓ Home Pick Up & Return Service from your Door!
- ✓ Comfortable & Relaxing Coach Travel
- ✓ Be Looked after from Start to Finish by our Drivers
- ✓ High Standard Hotels with Good Food
- ✓ Included Sightseeing Excursions
- ✓ Afternoon Tea on Outward Journey
- ✓ Portorage of your Luggage

LOW DEPOSITS - BOOK FOR ONLY £50 PER PERSON!

CALL 0845 485 2434 FOR YOUR FREE BROCHURE | WWW.WHITTLECOACH.CO.UK

Do you suffer from heat loss, outside noise or draughty windows like many older properties?

**Bespoke
Secondary
Glazing**

Secondary glazing from Lansec greatly reduces draughts and heat loss while retaining the traditional appearance of your original windows

- **Recommended** by Historic England for heritage and Grade 2 listed buildings
- **Barely visible** from inside or outside
- **Colour matched** to your existing windows
- **10 year** material and labour guarantee
- **Local**, family run business



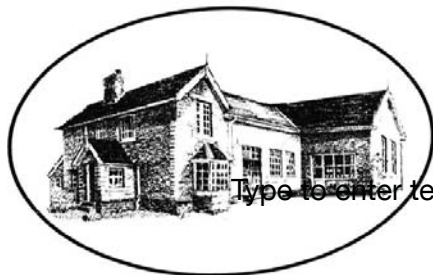
01299 544013
lansecglz.co.uk

Unit 4 Blackmanstitch, Long Bank, Bewdley, Worcs DY12 2QW



Bayton Church of England Primary School

- Be the best you can be, as a child of God -



Type to enter text

www.baytonceprimary.co.uk
01299 832393
office@baytonpri.worcs.sch.uk

Call or email to book an appointment to visit our school and meet our staff.

"We offer an alternative and unique Primary School experience, in an idyllic rural setting. A small family-orientated school with a caring ethos and traditional values, coupled with excellent results. If you want the very best for your child, come and visit us."

*Ms. Jolanda Simmonds
Head Teacher*

**Spaces currently in Years 4, 5 & 6, and we are also welcoming Parents & Carers of September 2019 intake.
Governor vacancies – please call for information**

Rated "Outstanding" in our latest SIAMs inspection (March 2018).

Friendship – Hope – Perseverance – Compassion – Trust – Forgiveness – Responsibility – Respect – Truthfulness

Our school vision: We aim for everyone to be a part of our community, be life-long learners who are confident, enthusiastic, valued and reach their God given full potential.



**TEME LEISURE -
BUILDING A BETTER
FUTURE**



Deana Edwards, one of the instructors at Teme Leisure

The Teme Leisure fitness suites have had a complete refurbishment of both the Cleobury and Ludlow facilities. A visit to the Cleobury branch was a real eye-opener, with the whole range of equipment updated and the place looking like it's brand new. It may be the same building, but the rest of it is new - a place we should all be proud of.

Modern equipment impresses, shiny new even if it does the same job that early users of the place will remember. This is a serious investment of about £400,000 in encouraging all ages to get fitter, from athletes to the

senior citizens who just want to move without feeling it's too much for ageing limbs.

For the more mature amongst us, there's a GP Scheme where your doctor refers you to the gym and you have a consultation with an instructor like Deana Edwards or Carl Brookes, who show you the range of equipment and how to use it. If you're happy and want to go ahead, you start with a three month pass that lets you come along when it suits and gradually build up your strength. Not body building, but just agility and ease of movement. The result is better health, possibly weight loss if you're carrying too much and better mental health. Look in at www.teme-leisure.co.uk to learn more.

THE BRITISH LEGION

On March 20th, the Branch held its Annual Luncheon. Over 40 members and guests enjoyed the meal, and were then entertained by Clare Hadwell, recalling some of her experiences of the thirty years she spent as a teacher of the children of UK service personnel in Germany and Belgium.

Our next event is a Branch outing to Wormelow on July 10, to take part in the 2022 Violette

Szabo Day. This commemorates one of the only three women winners of the George Cross in World War Two. Violette was an agent of the Special Operations Executive, working behind enemy lines in Occupied France. In 1944, during her second mission, she was captured and sent to Ravensbrück concentration camp, where she was shot in early 1945. In 2000, Rosemary Rigby established a small Violette Szabo museum at Wormelow, and has held a celebration of Violette's life every summer since then.

The Legion is organising a coach trip there for the day, and all are welcome to join. The day will include a short commemorative service and a tea. The coach will leave the Talbot Hotel at noon, and tickets cost £15 each. Please apply to Mark Baldwin (270110), Mike Hermolle (271384) or Ron Breakwell (270830).

The Cleobury Branch of the Legion (not 'Royal' until 1971) was formed in 1921, less than two months after the new national body had been created on to represent the interests of ex-servicemen. Our branch is one of the oldest in the country.

**No.19
The Beauty Room**
with Jane Weaver

Wash away the aches, pains and stress of everyday life by indulging in a relaxing Swedish massage, any combination of back, shoulder, neck, arms and legs, ½, ¾, 1 or 1½ hrs, or treat yourself to a manicure/pedicure, waxing or tinting.

Telephone consultations available to discuss any personal requirements, treatments available at No.19 or in your own home. Contact Jane on 07968 882269 or email 19thebeautyroom@gmail.com

Just like the lotus flower we too have the ability to rise from the mud, bloom out of the darkness and radiate into the world!

Soft furnishing and
Interior Design Services

Masquerade
Fabrics Limited

01299 271 680
36 High Street Cleobury Mortimer near Kidderminster
Worcestershire DY14 8DQ

Retailers for Sanderson, Harlequin, Monkwell
Crowson and many more...

Comprehensive design, measuring and fitting service.

Jubilee Afternoon Tea

Cleobury Mortimer Festival Celebrations

Sunday 5th June at 2:00pm

Lacon Childe School



We are celebrating the Queens Platinum Jubilee
with a community Afternoon Tea event.

This is a limited Ticket event with proceeds going to Charity

All of this for only £5 per person

Our team of Ladies will serve Tea, Cakes and Scones
using traditional and vintage crockery.

Included in your ticket is a free raffle ticket.

**We look forward
to seeing you there**

Book your tickets by **May 15th** by calling

07824366443

or email **festivalcleobury@gmail.com**



Brought to you by the
Festival Volunteers Group
supported by





The Lamp Restaurant

15a High Street, Cleobury Mortimer, Shropshire, DY14 8DG

01299 272785 or 01299 271313

Fully Licenced and Air Conditioned

Serving Bangladeshi & Indian Cuisine



The Lamp Restaurant winner of Currylife award chef of the Year

Open 7days a week from 6.00pm until 11.00pm

The Lamp's cuisine, inspired by Sylhet, the second city of Bangladesh, offers a wide variety of choice along with established favourite dishes and a selection of Chef's Specials.

The wide variety of starters and accompaniments chosen by our chef to complement your main course.

Takeaway service offers free delivery up to 3miles for orders over £15.00.

Find us on Facebook: Lamp Inn Cleobury Mortimer



Michael Coombes Roofing & Building Maintenance.

Complete Re-roofing, Roof repairs, Pointing & Chimney repairs.

Slabbing & Brick work

Wall & Floor Tiling

Painting & Decorating

Over 20 Years experience in the Cleobury area.

Call Michael on 07854 047413

APSupplies

- ◆ Specialists in equestrian and field maintenance
- ◆ Haylage, hay and straw supplied
- ◆ From chain harrowing to mowing and baling
- ◆ Fencing to ménage maintenance
- ◆ Woodland management and coppicing
- ◆ Concrete pads and sheds all at competitive rates

APSupplies.....Call today for a chat !



Ant Harman: 07779239393



TURNERS GATES

bespoke sizes at standard prices



A small family run business specialising in quality wooden gates to suit all entrances.

Visit our website: www.turnersgates.co.uk

Drop us an email: turnersgates@outlook.com

Or give us a call on: 01299 270 965



Andrew Jordan (Jordy)
JRD.GROUNDWORK@GMAIL.COM

Moors View
Moors Lane, Oreton,
Kidderminster, Worcestershire
DY14 8RH



AVAILABLE SERVICES

- Foundation & footings
- Concreting
- Driveways
- Ditching
- Drainage
- Landscaping
- General Building
- Fencing
- Hedgecutting
- Digger Hire
- All Jobs Undertaken

TIME TO CLEAN YOUR OVEN? LET US DO THE JOB YOU HATE

AS SEEN
ON TV

- Ovens
- Grills
- Extractors
- Filters
- BBQs
- Microwaves
- Hobs
- Ranges
- AGAs

Call or go online today for your free estimate



07913 123543
ovenclean.com



CARING FOR GOD'S ACRE

I always like to be the bearer of good news. This month I can tell you that Opening the Ark, a project for churchyards within the AONB or Area of Outstanding Natural Beauty, is coming to a church near you this summer. Funded by the National Lottery Heritage Fund and the Green Recovery Challenge Fund it's focussing on 26 specific churchyards and surrounding communities.

The aim is to work with lots of *you* to improve the biodiversity within burial grounds and to extend that biodiversity out to the wider community. Plans for discovery days in and around eight churches are already under way with six already identified. Work has started on planning those days, to make them fascinating for all age groups. Kirsty Stevens and her assistant Megan Gallant are already working in some local schools, providing educational opportunities for children.



Volunteers hard at work in Hope Bagot churchyard, bringing a little order to a very beautiful setting.

So what might you discover going on in your local or nearby churchyard? Well you might find yourself putting up boxes for swifts to live in or making bug hotels. You could be improving habitats in your local school. You would love creating areas of wild flowers in your village, because flowers always cheer us all up (and a variation on dandelions on our verges would make a better display).

Out of the Ark (OtA) will be in Clun churchyard on 26th June coinciding with Clun Open gardens. In Stoke St. Milborough, OtA will be running a session with Bitterley School pupils to coincide with their Bell Festival on the 15th June. Before all of these, Kirsty will be talking to

the WI in Caynham on 11th May, so they will know all about it this month.

If you have never thought of your churchyard as a place with lots going on, you could find more happening than anywhere else in the last two years (that is a COVID joke!). The other thing to remember is that all these activities and more are free. If you have children they could have a great time at any one of these events, gaining more knowledge and making some fascinating things too. All adults are equally welcome – the more the merrier.

The list below will give you more of the places signed up to the project, and planning events this Summer. If you want more information email Kirsty Stevens, kirsty@cfga.org.uk. You should not have to travel far to learn things that could make our communities richer in nature and better places to live. All the events run from 2-00 to 5.00pm. Hope to see you there.

Bromfield –22nd May; Hope Bagot - 3rd July; .

Norbury – 16th July; Clungunford –29th July;

Bishop's Castle –19th August; Buildwas –10th September.

Anni Holden Calver, CfGA trustee & member of The Churchyard Task Team

www.caringforgodsacre.org.uk

www.discovershropshirechurches.c.uk

BEWARE - ANOTHER SCAM

I received a letter today, with the heading 'Consumer Rights' with an EPC document attached. It looks official and makes reference to government insulation schemes and refers to a statement of intent from Ceredigion Council which it claims 'can be found online at shropshire.gov.uk'. I certainly could not find the document. The letter (in both Welsh and English) states that government funded upgrades are available 'at no cost to you' with ECO funding.

It lists a range of people who 'could' be eligible to have things paid for.

Overall, the letter gives the impression that it has been sent by a government organisation. It asks the recipient to 'please call us regarding your EPC', etc. An internet search reveals that this is a private company, Consumer Rights Energy Limited. However, nowhere on the letter do the words 'Energy Limited' appear. This is obviously a scam (a crafty one - given that the person being scammed pays for the call!), and I can't help wondering how many people might get sucked into their scheme. *Peter Hill*



Doddington Lodge

Residential Care Home



Remember to follow us

Doddington Lodge Post

HILDA'S 100TH BIRTHDAY CELEBRATIONS



It's been a wonderful time celebrating such a special birthday. Champagne, live music, dancing and singing. Lots of cards, flowers and presents. Family & friends made Hilda's day one to remember. And of course a show stopper birthday cake creation by Rachel. A 3 tier cake as Hilda was know for her beautiful wedding cakes. Thank you to everyone that sent Birthday messages and cards, especially the one from the Queen. A special thank you to the children in Year 2 Leopards from Tenbury Primary School and children from the Learning Zone in Dubai English Speaking School who sent beautiful cards for Hilda's 100th Birthday.



SUMMER FETE

On Saturday 23rd July 2022 we will be hosting our annual Doddington Lodge Summer Fete. We are calling all stall holders, entertainers and face painters who would like to come and join us and be part of this wonderful community day of celebrations.

To find out more or to confirm you would like to book please contact: reception@doddingtonlodge.com

www.doddingtonlodge.com | E: enquiries@doddingtonlodge.com | T: 01584 707084



We hope you have a wonderful Easter holiday, with lots of Easter Eggs and time with family & friends. A few of our Residents had lovely Easter portraits taken.

**CHILDREN OF LACON CHILDE SCHOOL
& CLEE HILL PRIMARY SCHOOL VISIT
DODDINGTON LODGE**

What a wonderful visit we had from the children of Lacon Childe School and Clee Hill Primary School. A poetry recital with lots of happy smiling children and residents, it was lovely to see and hear fun and laughter here at Doddington Lodge. The residents really enjoyed hearing poetry that was familiar to them, such as *The Jabberwocky* by Lewis Carroll, *We're Going on a Bear Hunt* by Michael Rosen, *The Locomotive* by Julian Tuwin and *The Smile* by Spike Milligan.

Our residents absolutely loved meeting the pupils and the pupils engaged so openly that it was a pleasure to see. Eileen and Joan met the children that they write to regularly which was lovely. Thank you to everyone. We hope we can arrange more visits on a regular basis.



★ **TEAM SPOTLIGHT** ★
Leanne Pipe

Leanne has been with us at Doddington Lodge for just over 12 months as Senior Night Carer. Leanne lives in Stottesdon with her Labrador and crazy parrot. She has grown up sons, loves to have lunches and drinks with friends, going camping and exercising at the gym.

Leanne loves working nights at Doddington Lodge as the atmosphere is calm and relaxed and she enjoys the company and working with the other team members. Everyone is happy to see Leanne, she always has a smile, even when handing over after a 12-hour shift. She's bubbly with a really great sense of humour. A very popular member of staff. We are very lucky to have Leanne as part of the Doddington Lodge Team.

www.doddingtonlodge.com | E: enquiries@doddingtonlodge.com | T: 01584 707084



A small local business.

I am a qualified lawyer with over 30 years experience offering a personal and approachable service.

I undertake specialist will drafting, lasting powers of attorney, deputyship applications and probate.

"I've used Mandy at Westons Wills and Probate numerous times over recent years covering all aspects of her expertise. Her guidance on the way forward and solutions to issues that she has suggested has been excellent. She is extremely communicative and responsive, and handles difficult situations with compassion and empathy. I have happily and confidently recommended her services to everyone I know that would benefit from her services."

"Mandy Weston of Westons Wills and Probate is a very professional and knowledgeable person. She has now become my 'go to' legal adviser and has taken on many legal tasks for me and my family. Wills, Probate, Inheritance Tax and Powers of Attorney. I trust her judgement and experience to act in mine and my family's best interest. I would highly recommend her legal services to anyone."



Contact me today

"Great expertise and a friendly professional manner"



Contact Mandy Weston Phone 01299 405873 Mobile 07931 411733

Email mandy@westonswillsandprobate.co.uk **Website** www.westonswillsandprobate.co.uk

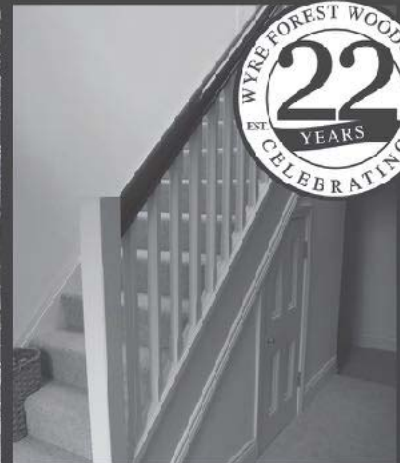
Address The Old Snuff Mill Warehouse, Park Lane, Bewdley, Worcestershire DY12 2EL



**WYRE FOREST
WOODCRAFT**
purpose made joinery

**Specialists in the Manufacture
of Purpose Made Joinery**

- Tailor Made Timber Windows
- Traditional and Contemporary Style Timber Doors
- Custom Made Staircases
- Bespoke Conservatories
- Made to Measure Gates




TO SEE EXAMPLES OF OUR FULLY FACTORY FINISHED JOINERY VISIT OUR WORKSHOPS AND SHOWROOM

www.wyreforestwoodcraft.co.uk

01562 68100 | enquiry@wyreforestwoodcraft.co.uk

Oldington Lane | Firs Ind Est | Kidderminster | Worcestershire | DY11 7QN

IRENA S.A.C DIP. (DIST). N.C.F.E. M.C.F.H.P.
FOOT HEALTH CARE PRACTITIONER




All your foot problems dealt with:-

- Foot health check • Verrucas etc.
- Corns • Medical Manicure
- Callus • Medical Pedicure

Free vascular Doppler Check of your feet

The Old Farmhouse
Button Bridge, nr Bewdley
DY12 3AW



Mobile visits available
01299 841 277
hessins@gmail.com

Paul Harding  **Tree Services**

- Tree surgery and felling
- Woodland thinning & maintenance
- Hedge trimming & grass cutting
- Supplier of hardwood logs, kindling and garden bark

•NPTC certified fully insured. Domestic and commercial work undertaken.
Tel 01584 890 993 Mob 07970 878 224

Hollywaste Holiday Lets

Our 2 bedroom (ensuite) cottage, sleeps up to 6 adults, situated in Hollywaste, Cleobury Mortimer. Fully equipped kitchen, open plan living room with log burner, dining area and downstairs WC. Includes Freesat and fast WiFi. There are enclosed & open decking areas outside, to take advantage of the beautiful countryside views, and a grassed area for outdoor games. Open all year round and welcomes adults, children, 1 large dog or up to 2 small dogs

Discount of 10% available for locals simply quote "keepitlocal" at the checkout

Events we can accommodate:
Staycations, Pamper weekends, Shooting weekends, Wedding venue, Minimoon stays, Stargazing weekends, Cookery weekends & events, Camping and caravan pitches are also available!
If you're interested in hiring our space or land for any event and time frame.

Tel: 07962 151322 Email: hollywasteholidaylets@gmail.com FB: <https://www.facebook.com/HollywasteHolidayCottage>
Website: <https://hollywasteholidaylets.squarespace.com> for more information

 **Kingfisher Crafts**
Sally Serrell-Cooke
07890 721657 | kingfishercrafts299@gmail.com
Visit me on Etsy and Instagram: **KingfisherCrafts299**



New Baby Hampers (Travel Changing Mat, Bibs, Nursing Towels, Quillow) *
Placemat Sets * Wine Gift Bags *
Cafetiere Jackets * Festive Gifts



CARDS, GIFTS, HOMEWARE, HARDWARE AND EVERYDAY ESSENTIALS!

Friendly Staff, and a great range of stock with prices to match!

If you need it, and you want it! We've probably got it!

Pop inside before you pop online!

18 High Street, Cleobury Mortimer

Tel: 01299 489590

Email: cleoburrs.onthehighstreet@gmail.com

Like our Facebook page CLEOBURRS

Keep up to date with the latest products!

FLAT FOR SALE IN CLEOBURY MORTIMER HIGH STREET £50,000

1 BEDROOMED , VACANT POSSESSION ,
LEASEHOLD (SERVICE CHARGES
APPLY) ,PERIOD FEATURES INCLUDING SASH
WINDOWS , CONVENIENT HIGH STREET
LOCATION , RECENTLY REFITTED BATHROOM ,
ELECTRIC HEATING , CASH PURCHASERS ,
EXCELLENT VALUE @ £50K , FOR MORE DETAILS
OR TO VIEW TELEPHONE ; 01584 890225 OR
01584 891596

Rachel Siddall

DipCFHP, MPSPract

Footcare in the privacy of your own

home:

Nail trimming
Ingrowing toenails
Corn removal
Thickening nails
Callus reduction
Verruca treatment
Diabetic foot care



07478 007913



Hobbs Building Services

EST 25Years.

A Total Plastering, Maintenance and Building Service for your home,
business and outbuildings.
Insurance work undertaken

Emergency call out service for general plumbing, roofing, boarding up damaged doors and
windows. For a free quote please call;

Ian on; 07967190742

Email: hobbsbuildingservice@yahoo.co.uk Or Call/Text Kelly on; 07790085307

DODDINGTON

To celebrate the Queen's Platinum Jubilee, an exhibition will share local stories about the people and the area over the last 70 years. Open daily from Thursday 2nd - Sunday 5th June in St John's Church Drop in any time between 10am and 5pm to learn how the community has changed over the years, read and hear local people's memories, some recorded for the first time. And what would a visit to St John's be without a cuppa and refreshments? Park at the Village Hall or the nearby cattle grid, but please keep the bus stop clear If you have anything you would like to contribute to the exhibition, there is still time – please contact us as below.

Our new path has been well used since completion and we need to update thanks to grant funders: Shropshire Historic Churches Trust and Garfield Weston Foundation together covered the cost of the path; we are very grateful to both. Church Walking Pilgrimages' grant can be put towards the toilet we will be installing. For up to date news follow us on Facebook: @StJohnsDoddington, or check our website: www.achurchnearyou.com/

church/10505/ Email: stjohnsdoddington@gmail.com
Celia Gibb 01584 318036

NEEN SAVAGE

SUNFLOWERS

What a colourful idea. Neen Savage have a Sunflower Growing Competition, open to everyone within a 15 mile radius of the village. Seeds and entry forms are available at the Cleobury Farmers Market or from Cleobury Country Centre, Gallaghers, Neen Savage church after services there, or you can contact organiser Emma Haywood on 07748 131 486 or ghaywood137@btinternet.com.

The entry fee is £5.00 per family and for that you get ten seeds to plant, nurture and maybe win one of a range of prizes. Proceeds go to St Mary's church in Neen and the Disasters Emergency Committee appeal for Ukraine. Judging will be at entrants' homes around the end of August, date to be confirmed. And the idea should bring another splash of colour to the summer. Good luck!

CHRISTINE PRICE

Christine passed away on March 23rd after 18 years of fighting progressive multiple sclerosis with berecellar ataxia. Through the 12 years she and husband Stuart lived in Ditton Mill Park,

she was cared for by him and carers and nurses. She and Stuart had been married almost 37 years and she was assistant ,manager at a restaurant in Belbroughton before they moved to Ditton Mill and a quiet country life. She enjoyed occasional trips across the Welsh border to Saundersfoot, plus visits to local shops and to the hairdresser. She may have been ill, but still cared about her appearance

Sympathies of all who knew her go to Stuart, her brothers Peter and Brian and all who knew her.

POTHOLE OF THE MONTH



This is an old friend, the reason your car gives a 'cerlunk' as you drive down Childe Road and on into Back Lane. Overlooked in a recent drive to repair our roads and still there when we looked on April 22nd.



**THE CLEOBURY
COUNTRY CENTRE**

Contacting us:

t: 01299 272 300

e: business@cleoburycountry.com

www.cleoburycountrycentre.com

Upcoming Training Courses:

Food Hygiene L2—£70+VAT—07.06.22

EFAW-£75+VAT—21.06.22

EFAW/Peadiatric FA-£150+VAT-28,29/06/22

Cleobury Country Farmers Market

Saturday 21st May 2022

Cleobury Opticians

NHS & private eye tests ♦ FREE children's glasses

FREE NHS glasses ♦ Home visits



Opening Times-	
Tuesday	9am-1pm 2pm-5pm
Wednesday	9am-1pm 2pm-5pm
Thursday	9am-1pm 2pm-5pm
Friday	10am-2pm
Saturday	9am-1pm

www.cleoburopticians.co.uk

16 Church Street, Cleobury Mortimer, Kidderminster
DY14 8BX

Tel: **01299 270012**

Email: cleoburopticians@outlook.com



All Aspects of carpentry work undertaken

Level 3 City & Guilds in Carpentry & Joinery, 20 years of experience

Tel: **07854 032750**

Email: duncpearce1@gmail.com

Stewart Mumford Architectural Services Bespoke Architecture

Great value personal service backed up with extensive local knowledge, established links with other construction professionals to ensure comprehensive packages specifically tailored to individual needs.

Initial consultation free of charge.

Specialist in Works to Listed Buildings, Affordable Houses, Open Market Houses, House Extension and Alteration, Barn Conversion and Commercial Projects.



T: 01299 271068

M: 07977 921039

E: office@stewartmumford.co.uk



Clebury Mortimer Benefice
Church services throughout the Benefice in May

St Mary's Clebury Mortimer

Sunday 1st May – 10am Family Eucharist
Sunday 8th May – 8.30am and 10am Eucharist
Sunday 15th May– 10am Eucharist
Sunday 22nd May- 10am Eucharist
Sunday 29th May – Benefice Eucharist

St Michael and All Angels', Hopton Wafers

Sunday 1st May- 9.30am Eucharist
Sunday 15th May - 9.30am Eucharist

St John the Baptist, Doddington

Sunday 1st May – 3pm Archdeacon Reopening of Newly Accessible Path
Sunday 15th May – 3pm Evening Prayer

All Saints', Neen Sollars

Sunday 1st May– 11.am Village Worship
Sunday 8th May– 11.am Eucharist
Sunday 15th May– 11.am Village Worship
Sunday 22nd May – 11.00am Village Worship

St George's, Milson

Sunday 15th May– 11.15am Eucharist


St Mary's, Neen Savage

Sunday 15th May– 6pm Evening Prayer BCP

St John the Baptist, Kinlet

Sunday 8th May– 11.15am Eucharist BCP
Sunday 22nd – 6.00pm Evening Prayer BCP

DROP IN AT ST. MARY'S

With St. Mary's Pastoral Care Group, every Thursday: 10.00 am – 11.30am 
Drop in for a free cup of coffee/tea and biscuit with the chance to have a chat and share problems.

UKRAINE: Thinking of hosting refugees?

Are you here from Ukraine and want to meet up with others? Please join us.

Access to support and advice if needed.

The Church Office is open Tuesday and Thursday from 9.00am-3.00pm
Contact details: Grace Johnson cleburychurch@hotmail.com
Tel: 01299 272916

Bespoke framing and mounting for:

- Artwork
- Photographs
- Canvases



The Framing Studio Cleobury Mortimer

Paul Serrell-Cooke
07791 378240

Bringing artwork and images to life



Quality firewood for sale



£190 for 2 cubic metres of barn stored ash firewood delivered to your driveway.

We source our wood from a reputable and sustainable source.

Can do multiple loads at a discounted rate.

Can deliver up to 20 mile radius from Bayton (DY14 9NA).

Call John Edwards 07531025018



H.C.P.C Number CH22527

Cleobury Chiropody Janet Manley

Qualified Chiropodist
MSSCh. MBChA
BSYA (reflex) REIKI Master

Tele:- 01299-272841

Mob:- 07805-268439

Email: janetpmanley@yahoo.co.uk

2, Tenbury Road,
Cleobury Mortimer,
Kidderminster,
Worcs.
DY14 8RB

A Round Of Appaws

Professional Dog Groomer
C&G Levels 2 & 3 Diploma

Fully Insured

Call or text Jules on
07368359144

aroundofappaws1@gmail.com



A. Farr Painting & Decorating

Give your home a beautiful new look....

Contact:

andyfarr12345@gmail.com 07815 855340

Guitar Lessons

With an experienced local tutor
Teaching for 26 years privately and in schools
Exams available. DBS certificate
All ages, styles and abilities welcome
Contact Mark for more information @
MARK.CHECKLEY@sky.com
01746 718636 - 07708 386433

Simon Morton in the Garden.

Two Sides of the Same Coin

The garden is back...and it's blooming lovely.

After a seemingly endless winter of soginess, winds and general meh-ness, a sunny Easter Bank Holiday Weekend prompted a major push by flora and fauna. And when the plants are happy, the gardeners are too.

Positivity abounds. My beds of tulips - long term readers of this column will be aware of the stress-induced headaches they have brought to the Morton potting shed - have burst forth and are looking pretty ruddy marvellous. Granted, the colour scheme is a little wonky - all the red ones came up first, followed by pink and then yellow - and their success *has* highlighted some major bare patches in parts of the scheme, but I'm a very happy chappy.

Also, some weird white daffodil hybrid bulbs I planted in the Autumn have (finally) made an appearance and are lighting up a path like an airport runway. They're cracking and already on the shopping list for later in the year.

Even a mysterious pack of seeds I bought on a whim labelled 'Greenhouse Lucky Dip' seem to be putting in a shift and germinating. This really will be a voyage of discovery as the pack contained a real smorgasbord of seeds - some were the size of a particularly juicy grape, others absolutely minuscule (I'm actually a little worried that the tiny seeds weren't actually seeds at all, but dust and debris in the bottom of the packet - have I been sowing dust?!) Either way, a patchy tray

of green shoots of God-only-knows-what is slowly making an appearance in a greenhouse near you.

So, in short, my current gardening status: Giddy as a kipper.

However, it's not all been sunshine and tulip displays. I'm also in trouble.

I innocently/stupidly (delete as applicable) left a pair of secateurs in my trouser pockets, and they somehow made it into our washing machine. I'll spare you the details, but it's safe to say that the noise the washing machine made when building up to the spin cycle will haunt me for weeks.

Sadly, this is not my first offence. Far from it. Baling twine (the most indestructible material known to man) is a regular visitor to the washing machine filter. Same goes for soggy seed packets, pens and those little white label thingies. While ours is a strong marriage, and I have every confidence we'll weather the 'secateur-gate' storm, I have been checking to see if I can fit a camp bed into the greenhouse (just in case).

Here, dear reader, are the two sides of the gardening coin in microcosm. The positive - verdant tulip displays, freshly mown lawns - and the negative - costly washing machine repairs. Sounds like a fair trade-off to me, but what do you think?

No matter how you spend the next month, I hope you get the chance to enjoy the many positives of a garden at this time of year. Oh, and check your pockets before sticking them in the laundry basket.

Simon Morton

More Clarion Smalls

GUTTER CLEANING SERVICE

No ladders or scaffolding needed.
Can reach any awkward place.

All residential and commercial

Competitive rates

Call Ian on 07870384096

HIS & HERS

Dog Grooming Parlour

All breeds and
Cross breeds professionally
Trimmed and Groomed



J. A. Guest

Tel: 07790 796 027

PAUL LYNCH PLASTERING SERVICES

Recently relocated. Offering all aspects
of plastering including making and
repairing mouldings, cornices, etc.
Fully insured, references available.

07890 049 592

or

01299 272931

Washing Machine
Repairs and Sales

JULIAN BREAKWELL

Telephone 07791 633 746

Repairs to all makes, including
Bosch, Hoover, Zanussi and
Hotpoint

**NO CALL OUT CHARGE
FIXED LABOUR COST**

Ever After

- Breakfast club
- After school club
- Holiday club
- "Forest schools" outings
- 15hrs education funding
- 24U funding
- Age ranges: 3 months to 11 years



Day Nursery
Cleobury Mortimer

Please contact us on 01299 272 777
Or Call in to see us anytime.

Friendly, Caring Environment for the Community

Hi everyone, don't forget that we
are still collecting soft toys and
teddies to be sent to the less
fortunate.

So drop them off in Market Hall
please.

Many thanks for your help.

Collections4charities.com 07976307889

Piano tutor

Francis Engleheart

*All ages — I specialise in teaching adults
without previous experience*

I come to you

07710 288526 • fengleheart@hotmail.com

S. L. CARTER

**PROFESSIONAL PAINTER AND
DECORATOR**

**PLASTERING, TILING, COVING AND
GLAZING**

CLEOBURY MORTIMER

TEL: 01299 272868

MOBILE: 07815 483 029

THE BREAKFAST CLUB

There was another good turn-out of members at the Cleobury Golf Club in April to hear Councillor John Greaves tackle the weighty subject of Energy and Climate Change. John is particularly well fitted to speak on this subject as he is Technical Lead at the Energy Research Partnership, a public-private partnership seeking to foster innovation in the energy sector, with the aim of reducing carbon dioxide emissions nationally.

John gave out some well-produced factsheets, showing our current energy use, how it is generated, and future trends. The UK government stated last year that no energy would be generated from fossil fuels in the UK by 2035. This is not actually achievable, given the variability of wind and solar power, our very slow progress towards increasing our nuclear capacity, and the increasing demand from electric vehicle charging. In fact, with the necessary decommissioning of some of our older nuclear power stations, the contribution of nuclear will probably fall over the next few years.

Quite rightly, John emphasised that careful use of energy, even at household level, could make a useful contribution to reducing our overall carbon emissions. The cheapest low-carbon energy is the energy we do not use! John will be back at the Club in July to explore other aspects of the Climate Change Challenge and the impact we are already witnessing.

Our next meeting is scheduled for May 10th at the Golf Club, when our speaker will be Mark 'Jock' Brown, whose subject will be 'The Myth-burdened Electric Car'. Those wishing to attend should contact Angela Drennan (270636) to book places.

Mark Baldwin

SAVE OUR CURLEWS IN CLEE HILL

Over 40 local people are helping with the Community Wildlife Group Bird Survey this year, the most since we started 11 years ago. It's not too late to help, if you want to join in. There was an increase in the local Curlew population from 8 to 10 breeding pairs in 2021, so that's two pieces of excellent news to start our 2022 fieldwork season!!!

We are also continuing to work with the Shropshire Ornithological Society, to find as many Curlew nests as we can, to put an electric fence around them to protect the eggs from predation, and then attach radio tags to the chicks that fledge, to track them and see what happens to them. Before we can fence their nests, we need to find all the breeding pairs of Curlews. We need your help. If you see or hear a Curlew, please tell us.

We would also like to know if you see or hear any Lapwing, Kestrel or Cuckoo, or see evidence of breeding Red Kite, or just want to join our survey, please contact Chris Bargman (01299 270514, email: chcwg@shropscwgs.org.uk)

Leo Smith

HISTORY BY HOLLYWOOD

**Cecil B De Mille
much against his will
Was persuaded to keep Moses
Out of the Wars of the Roses**

Dennis Norden

Worried about rising mortgage rates? Buying your first home or moving home?

- I compare, advise and arrange mortgages from the entire market
- I personally manage the entire process to ensure it is smooth
- **100% free** - I never charge a fee for my mortgage services
 - Access to highly competitive **life insurance** policies
- I am also a qualified **Will Writer** so contact me to have your Will written

Call me now to find out how I can help

YOUR HOME MAY BE REPOSSESSED IF YOU DO NOT KEEP UP REPAYMENTS ON YOUR MORTGAGE

01299 549 820 | Stephanie@midasfp.com | www.midasfp.co.uk
Midas Financial Planning Services Ltd is authorised and Regulated by the Financial Conduct Authority



**I'm Stephanie
01299
549 820**

NEWSPAPER DELIVERIES



Monday- Saturday

Covers Cleobury Mortimer and Clee Hill

Contact Laura Callwood on 07495 708404

or lauracallwood@outlook.com

WILMAS CLEANING & IRONING SERVICES

Experienced cleaner, very trustworthy and reliable. If you would like your ironing done you can drop to my house. I am available weekdays, and weekend's times/days flexible. References are available upon request.



Please contact me for further details on

07891416477
01299 272 941



Number Nineteen

No.19 Denture Repairs

Dental Laboratory

SPEEDY, QUALITY DENTURE REPAIRS

Cracked/broken dentures repaired the same day.

A 1 HOUR service is available for when time is of the essence, just call to make an appointment .

19 Lower Street, Cleobury Mortimer, DY14 8AL

Email: nevilleweaver@googlemail.com

Phone: 07973856733

All work undertaken by a GDC registered technician



A.B. Plastering
Plus Traditional Lime Plastering

Adrian Booton
PLASTERER

4 Severne Green, Bayton
Nr Kidderminster, DY14 9LL

Tel: 01299 832 838
Mobile: 07974 582 524



TOTAL PROPERTY MAINTENANCE

Fireplaces built for multi-fuel burning stoves,
Plastering, Building & General Maintenance

Rob Taylor

Mobile: 07944 074540

Landline: 01299 832734

Email: rptbuilding@hotmail.co.uk

E.PURSLOW & SON LTD

Stone, Gravel, Cement Supplies

Approved Coal Merchant

Calor Gas Stockists

Tarmacadam Specialists

Car Parks and Driveways

Constructed.

TEL: 01299 270314

David Ward
firewood



Do you need a dependable consistent quality supply of seasoned or kiln dried hardwood and softwood firewood?

Cut and split to suit and delivered in breathable 1.2-cubic metre bags, so no need to restack.

Small delivery vehicle, fitted with crane, can deliver to most locations and situations.

CALL DAVID TO DISCUSS YOUR REQUIREMENTS:

Mobile: 07866 441154

Alan Smith Aerials

Digital TV Installations.

Freeview aerials fitted and distributed around the house.

Freesat box, dish, and cable supplied and fitted. One off payment, **No contract or subscription required.**

Extra points, Repairs, New fits, Set ups, Multi room.

All work is carried out by a **Local**, fully qualified and insured installer.

01299 270007 or 07970 675728

The much delayed process of recruiting new Police officers following the panic stricken and botched 'Austerity' cuts of 2010 seems to have hit problems. You might recall that up to 20,000 experienced officers were 'let go' and are being replaced with new recruits. The Police Federation have expressed doubts over the quality of many of the candidates who are 'surprised' that they have to work weekends and lack confidence when dealing with people. Up to 19% of recruits are leaving before they qualify and potential officers get anxious when speaking to the public, can't speak to people on the telephone and run away from physical violence leaving their tutor at risk.

One knocked on a door and ran away before it was answered and, in one instance, a tutor supported a group of eight trainees. One was dismissed, two resigned, two were on long term sick leave and one was under investigation for gross misconduct. Just what the service needs to cope with increasing crime...One problem seems to be the priority given to academic learning rather than people skills, all tied in with the requirement to have or obtain a university degree. This goes back to the policy of universities shielding students from any reference to wickedness and issuing health warnings for works by Shakespeare and other classics. As in the case of social workers, these candidates appear to be unsuited to the work they are expected to perform so should you see a policeman (or woman) on the street, don't be surprised if they ask you to see them across the road...

On a related subject, going back several months, you may recall the case of a terminally ill man who was wrestled to the ground by six police officers after 'mooning' at a speed camera. He is now due to appear in court charged with, amongst other things, 'causing harassment, alarm or distress' presumably to all the officers involved in flattening him. Still, this must be good news because if West Mercia Police have the time

and energy to pursue a case like this, it means that they have fixed all the more serious stuff such as assault, burglary, drug dealing etc. Oh, hang on a minute.....

So the damning report on the Shrewsbury maternity scandal has now been made public and no punches have been pulled. There was a toxic regime in place for nearly two decades with a number of senior managers coming and going – often to better (paid) jobs without sorting things out. Matters were not helped by a policy of encouraging 'natural' births which was pushed by both the NHS and the Royal College of Midwives and included criticism of trusts with a higher than average number of Caesarian births. It would appear that at Shrewsbury, this principle was taken to extremes with intervention being delayed far too long in many cases. No news yet of any of the senior staff involved being brought to account but if the Post Office scandal is any guide, don't hold your breath...

I read with interest the case of the swimmer in the USA who was not a star performer as a man but 'changed horses' as it were to wipe the floor with his/her/their competitors in a womens event a few weeks later. I didn't think too much about this until I saw a photo of the first three finishers. The winner was about a foot taller than the second and third placed entrants and built like the proverbial brick outhouse compared with them. Time for a separate class in these cases?.

Astronomers have discovered a galaxy that was created earlier than any previously found and dating back to a few hundred million years after the 'Big Bang'. Scientists have still to confirm the age but if true, it could be even older than some of the potholes around Cleobury.

Cricket does have its uses. The author George Bernard Shaw once said that 'The English are not a very spiritual people so they invented cricket to give them some idea of eternity'.
Ariadne J Grumpy

TRACEY'S KREATIONS

28 High Street, Cleobury Mortimer

FRESH FRUIT AND VEGETABLES DAILY

FREE RANGE EGGS AND LOCAL PRODUCE

FREE DELIVERY

Fruit and Veg Boxes Delivered Daily to Your Door

www.traceyskreations.co.uk

INSTAGRAM FACEBOOK

Telephone: 01299 270943 / 07376 282444

Email: traceyskreation@gmail.com

Birthday Cards - Anniversary Cards

Special Occasion Cards

Ice Cream - Confectionery - Sweet Hampers

Helium Balloons - Toys

FREE DELIVERY



Family run business of 30 years, call us for a free no obligation quote

Finance available, buy now and pay later

5 Lupin Works, Worcester Road, Kidderminster DY10 1JR
Phone: 01562 822855 – Email: sales@twshq.com

THE SOCIAL CALENDAR

Date	Time	Details	Contact	Telephone
Wed 4 th	6-7pm	Evening Opening of the Foodbank		
Thurs 5 th		GREEN GARDEN WASTE WHEELIE BINS EMPTIED TODAY		
	10.00	Rock Pathfinders stride out from the Button Oak Inn. PAGE 21		
Mon 9 th	6.30	Creative Writing Group meet at the Library. PAGE 17		
Tues 10 th	7.30	Cleobury WI meet at the Market Hall to hear about Tai Chi. PAGE 15		
Wed 11 th	10.00	Walking for Health have an Away Day at the Golf Club. PAGE 21		
	10.00	CoCo Coffee Morning at the Market Hall		
	7.30	Royal British Legion meet at the Sports and Social Club, Love Lane		
Thurs 12 th		BLACK WHEELIE BINS AND RECYCLE BOXES EMPTIED TODAY		
	7.30	Fun Quiz at The Fighting Cocks, Stottesdon. £5 per head entry.		
Sat 14 th	09.00	Car Boot Sale at St Elizabeth's Church, Lower Street. PAGE 5		
	09.30	Plant Sale at the Market Hall. PAGE 17		
	7.30	Cleobury Concert Brass concert at the Parish Hall. PAGE 19		01584 891199
Mon 16 th	7.30	Clows Top Victory Hall AGM, guess where? PAGE 17		
Wed 18 th	7.30	Parish Hall Annual General Meeting. PAGE 15		
Thurs 19 th		GREEN GARDEN WASTE WHEELIE BINS EMPTIED TODAY		
	10.00	Rock Pathfinders walk out from The Cat Inn, Stourbridge. PAGE 21		
Fri 20 th		"Everything But The Band" provide live music at the Fighting Cocks		
Sat 21 st	9.30/12.30	The Cleobury Country Farmers Market in and around St Marys Church		
	10.00	Clows Top Plant Sale and Coffee Morning at Victory Hall. PAGE 5		
	7.30	"Flicks in the Sticks" at the Parish Hall. Kenneth Branagh "Belfast" PAGE 13		
Tues 24 th	1.00	Stroke Support and Carets Groups meet at St Mary's Place. PAGE 19		
Wed 25 th	10.00	Walking for Health step out from the Market Hall. PAGE 21		
	10.00	CoCo Coffee Morning at the Market Hall		
	6.30	Clows Top Garden Club leave for visit to Moors Meadow Garden. PAGE 5		
Thurs 26 th		BLACK WHEELIE BINS AND RECYCLE BOXES EMPTIED TODAY		
	7.30	Bingo at The Fighting Cocks pub, Stottesdon. Basket meals available.		
Sun 29 th	09.00	The Cycling Sportive rides out from the Leisure Centre. PAGE 11		
Mon 30 th	7.30	The Nearly Dead Poets meet at the Library. PAGE 17		
		AND LOOKING AHEAD TO JUNE.....		
Thurs 2 nd		GREEN GARDEN WASTE WHEELIE BINS EMPTIED TODAY		
Thurs 2 nd /sun 5 th		"A Century of Flowers" display in the Parish Church. PAGE 13		
Sun 5 th		CMFA special walk from the Parish Church. PAGE 21		
	2.00	Jubilee Afternoon Tea at Lacon Childe School. PAGE 28		
		JUST A REMINDER OF THESE REGULAR EVENTS.....		
		Every Monday, except Bank Holidays, Bingo in the Market Hall at 8.00		

Lower St Garage

7 Lower St, Cleobury Mortimer. DY14 8AA



- M.O.Ts on cars, motor bikes & small commercial vehicles
- Diagnostics, Air conditioning
- Tyres, Tyre fitting,
- Welding.
- Puncture repair and Tracking.
- Service and Repairs to most vehicles.
- Delivery and Collection Service Available

Contact The Team at Lower St Garage on: 01299 270208

Tele:- 01299-272757 *Hands on Printing* **Email:- clickclick2@hotmail.co.uk**
Mobile 07708 587787

All digital media printed to 6"x4" 5"x7" 8x6" 10"x8"
CANVAS WRAPS FROM 12"X16" - 30"X 20"
ENLARGEMENTS FROM 12X10" TO 24X36"
 FROM PHOTO'S, DIGITAL MEDIA & 35mm SLIDES

PASSPORT PHOTO'S ONLY £5-00
WHILE YOU WAIT

MOST VIDEO FORMATS TRANSFERRED TO D.V.D.
 USB or SD cards

INCLUDING VHS - VHSC - SONY 8 - DIGITAL 8 - Hi8 - MINI DV & BETAMAX
 REEL TO REEL & CASSETTE
AUDIO TAPES & OLD LPs TO CD

PHOTO & VIDEO FILES TRANSFERRED FROM MOBILES TO DVD ETC.

STANDARD 8 - SUPER 8 FILMS TRANSFERRED TO D.V.D.
 USB or SD cards
DAMAGED PHOTOGRAPHS RESTORED ETC.

BIRTHDAY AND CELEBRATION BANNERS

Look Who's 50 Today!

Video Filming Service

VINYL BANNERS - BUSINESS CARDS - SHORT RUN FLYERS INVITATIONS - ORDERS OF SERVICE

B-W OR COLOUR PHOTOCOPIES
SELECTION OF PHOTO FRAMES
 Traditional Studio Portraits and Pet Photo's

43, High St.
 Cleobury Mortimer.
 DY14 8DQ

 **LACON CHILDE SCHOOL** 
 the future begins here
 Headteacher: Darren Reynolds

1735



Lacon Childe School, Love Lane, Cleobury Mortimer, DY14 8PE Tel. 01299 270312 email - admin@lacon-childe.org.uk


LUDLOW SALVAGE
 ~ Est 2017 ~
 Reclaimed Building Materials and Architectural Antiques

Station yard, Station road,
 Woofferton, Ludlow SY8 4AW

T 07805 312168
@ ludlowsalvage@gmail.com
f /ludlowsalvage
ig /ludlowsalvage

WWW.LUDLOWSALVAGE.CO.UK

BoomeranG
 of Cleobury Mortimer
 private hire travel

- Friendly, reliable service
- Local & long distances
- Fully council licensed (up to 12 passengers)
- Airport transfers
- Courier service
- All occasions catered for

Tel: 01299 271257, Mob: 07411 142755, Email: stuart.boomerang@yahoo.co.uk

Cleobury Mortimer Golf Club

At Cleobury Mortimer Golf Club we believe that a really enjoyable golf day takes more than just a great golf course. We make sure that your whole experience, from the friendly welcome in the golf shop to your drinks and meal in our relaxed clubhouse, is all part of a day you'll remember.



Everyone Welcome

Membership available.

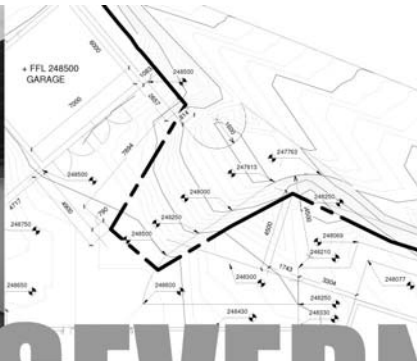
Just some of the many benefits of joining Cleobury Mortimer Golf Club

- Access to full length 27- hole golf course
- Opportunity to achieve and maintain a handicap
- Family, Friendly Environment
- Playing opportunities at all times of the week
- A range of competitive opportunities
- Open dawn to dusk 363 days a year.

We look forward to meeting you at Shropshire's friendliest golf club.

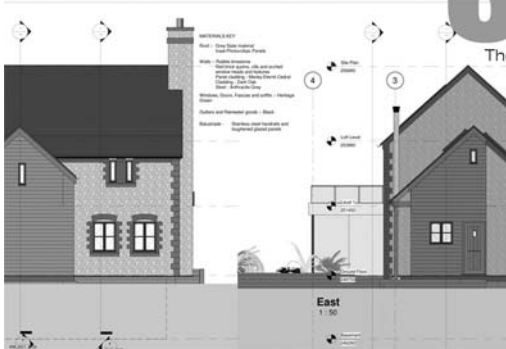


- ☎ 01299 271 112 (ext 1)
- ✉ pro@cleoburygolfclub.com
- 🌐 www.cleoburygolfclub.com

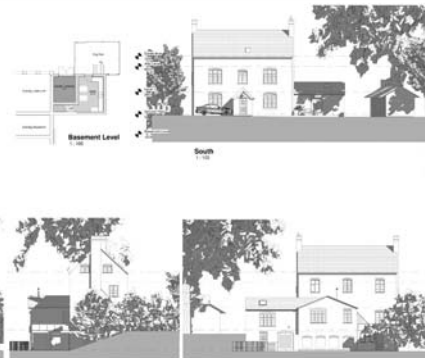
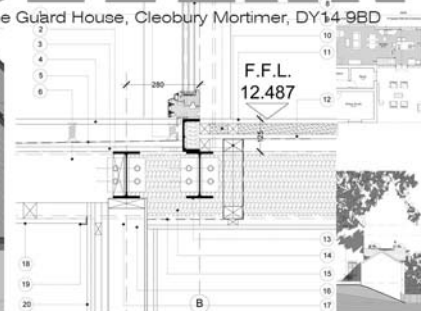


SEVERN

architects



The Guard House, Cleobury Mortimer, DY14 9BD



We are a friendly Shropshire based architectural practice with plenty of experience in all kinds of residential projects large and small. Using the latest 3D software package and technology we can turn your virtual dream home into a reality.

Contact us now on 07825 759484 or email julie@severnarchitects.co.uk for your consultation

Our Architectural Design Services include

- Design & Feasibility Studies
- General project Advice
- 3D Modelling
- 2D CAD Drawing
- Planning Advice and Submissions
- Building Regulation Applications
- Tender & Construction Drawings
- Contract & Project Management

RIBA 

Chartered Practice

KIDDERMINSTER

SELF STORAGE AND REMOVALS



STORAGE

Free insurance . Flexible Terms
Fixed Price Guarantee . No hidden costs

REMOVALS

Professional Removal Service
Est. over 25 years

PACKAGING MATERIALS

Boxes, Bubblewrap, Tape Etc. for sale
Free local deliveries on orders over £20

01562 744088

www.kidderminsterselfstorage.co.uk

Unit 11 Finepoint Way, Stourport Road, Kidderminster DY11 7FB
info@kidderminsterselfstorage.co.uk

Clarion Clippings - The Local News

THE TOWN FESTIVAL IS BACK

June the 4th sees the Festival back after two years and the Volunteer Group look forward to seeing you there.

We are happy to have for the first time two new attractions for children, which are free.

The "Slackline School" will be there all day with two instructors to teach all ages how to walk a very low elevated wire in a safe and fully supervised manner.

Peter Chand, Story Teller, will be bringing two story tellers who will entertain and captivate children and maybe perhaps grown ups? They will be on site all day offering sessions hourly from noon to 4.30 pm. Regularly seen at Hopton Court and further afield they offer genuine "telling" rather than just reading ... not to be missed.

With us again is Anthony Arnold who will be greeting visitors as they arrive, with circus skills and offering to teach anyone who wants to try to learn some over a two hour period in the afternoon. Again, this is free.

There will be a range of makers, designers and artisans both inside Lacon Childe School

and out on the field. Local groups, organisations and business will be represented. Games and entertainment will be offered by local youth organisations.

Always popular is the Dog Show with classes to suit every type of dog and handler organised by Birch Hill Dog Rescue. Cleobury Concert Brass will close things with an hour's concert at 3.00pm

There will be a wide range of meals, snacks and drinks available to suit all budgets, including Speciality coffee and soft drinks and of course ice cream.

The Festival Volunteers Group pack as much in as they can so by the day I am sure there will be much more to see and do. Please come and join us.

Paul French

A JUBILEE BEACON IN THE QE 11 PARK

Not yet but there will be very shortly, because the Council commissioned and have had built a custom made beacon which will be placed in the Park and will remain there permanently.

This really will be the "Cleobury Beacon" as all those involved in its design, production and placing are makers, craft people and

volunteers from our community. The siting for the beacon is close to the newly installed steps in the park.

The intention is to light the beacon at sunset on the 2nd June at 9.09pm and join with other such events around the UK and the Commonwealth.

The Sports and Social Club will be open serving drinks and discussions are taking place to discover what else may be possible on the evening.

Further information will follow.

Paul French

TAYLORS REUNITED

Those lovely ladies the Taylor Twins, Vanessa and Lisa -yes, they're married but that's how most people know them - had a big birthday in March. And a great, friendly party at the Sports and Social Club. Amongst the honoured guests was Eric, their dad, who they made extra welcome.



Stove Installations, Service and Repair

- All solid fuel wood burners and boilers supplied and installed
- Chimneys relined and twin wall systems built
- Chimney Pots, Cowls, Carbon Monoxide alarms and Air Bricks fitted
- All Stoves and Fires serviced including chimney sweep
- Hetas Landlord Safety Certificates

Tel: 01299 272712 Mbl: 07807 343006
email: info@rweaversservices.co.uk



ONE STOP ROOFING

The Flat Roof Specialists

- Rubber, Fibreglass & Felt
- Re-pointing & Chimney Repairs
- Fascias & Guttering



Take advantage of our offer: Replace your flat roof Making EPDM (rubber) your choice for a long lasting, weatherproof & high slip resistant membrane, with a lifespan of 50 years, **get it for the same price as felt**, which only carries a 10 year guarantee!

Replace your flat roof with EPDM (rubber) & add a skylight or lantern, giving extra light to your room starting **from as little as £400!!**

Freephone 0800 0855277 * 07538 471274

www.onestop-roofing.co.uk

onestoproofinguk@gmail.com

Family business est. 35 years.
All repair work undertaken

Proud members of
Checkatrade.com
Where reputation matters

CLEOBURY SEAFOOD & FREEZER CENTRE

6 Newhouse Farm - Tenbury Road - Cleobury Mortimer

01299 271345

Ready Meals

*We stock a wide range of ready meals, from the ordinary to the extra ordinary !
Plus a range of Vegetarian, Gluten Free and Vegan meals.*

Mr Dave's

*Meat, Chicken, Prawn and Vegetarian Balti, Madras Curry
Mr Dave's extra large naan, plain and garlic & coriander.*

Fish

*Cod, Haddock, Plaice fillets, Sea bass, Lemon sole, Cod Loins, Smoked Haddock.
Battered & breaded fish fillets. Young's Jumbo Cod Fish Fingers.(Very Popular)*

Seafood

*Raw king Prawns, Squid, , whitebait, cooked tiger prawns, scallops, seafood cocktail.
Hot & Spicy Prawns, Breaded Cod & Plaice Goujons*

*New Fish Cakes Thai Style Cod & Prawn, Smoked Haddock, Mozzarella & Spring Onion,
Sea Bass, Cod, Lime & Ginger.*

Fruit and Vegetables

Potato Products

Bannister Jacket Potatoes, Oven chips, Sweet Potato Fries Twister Fries, Hash Browns, Spicy Wedges

Chicken Products

Southern Fried Breaded Chicken Steaks, Breaded Chicken Goujons, Chicken Nuggets, Chicken Bites.

Gateaux for all occasions

BENNETTS ICE CREAM

Opening Times 9am to 4.30pm Mon to Friday. Saturday 9am to 12

Visit our web site www.cleoburyfreezercentre.co.uk

Cleobury Clarion May 2022



"We tried artificial flies. We tried lures.
We tried live bait. Nothing works ...
it's like they're psychic!"



"Blood-curdling screams. Hayes, will
do nothing to help us catch a fish."



CLEOBURY COMMUNITY HUB

Coffee Shop, Climb61, Youth Events

Mondays - 9:30am - 8pm

Tuesdays - 9:30am - 9pm

Fridays - 9:30am - 5:30pm

We had a wonderful time at our Shropshire HAF Holiday Club on the first three days of the Easter Holidays, we played games, climbed, did crafts, had hot lunches (including home made pizza) and had a lot of fun!! Thank you so much to those who volunteered and donated food and cakes.

The Community Hub was then open during the second week of half term for people to enjoy milkshakes, coffees and cakes as well as have a climb or relax with friends.

FOCUS ON: May Ladies Night @ Climb61

An evening for all ladies, whether you have climbed before or have never tried and would like to have a go. We can guarantee a friendly welcome with tea / coffee and biscuits as well as the opportunity to climb in a supportive and fun environment.

Don't forget our regular activities:

Mondays - Coffee Shop, Rock Tots, Soft Play, Kids Climbing Club, Youth Climbing Club, Climb61 Bouldering.

Tuesdays - Climb61 Bouldering, Soft Play, Coffee Shop

Wednesdays - Hub Youth - Wed 11th first one of May (alternate weeks)

Thursdays - Hub Youth - Thurs 5th first one of May (alternate weeks)

Fridays - Climb61 Bouldering, Soft Play, Coffee Shop

Climb61 Session Times - To book: www.smypp.org.uk

Mondays 1:15pm-2:45pm, 6:30pm-8pm

Tuesdays - 9:30am-11am, 11:15am-12:45pm, 2:15pm-3:45pm, 4pm-5:30pm,
5:45pm-7:15pm,

Fridays - 9:30am-11am, 11:15am-12:45pm, 2:15pm-3:45pm, 4pm-5:30pm



@cleoburycommunityhub

@saintmarysyouthproject @cleoburycommunityhub

NINEVEH RIDGE CARE FARM

Nineveh Ridge is a not for profit care farm for learning disability adults of all ages. We are on the back road between Cleobury Mortimer, and Bayton (only 2 miles from Clows Top). We pride ourselves on putting our service users first, and providing activities that suit all ages, capabilities, and interests. Nineveh Ridge Care Farm was established in 2008 with around 20 service users. Now in 2022, we have more than 50 that have regular visits every week.

We provide activities such as, farm animal care, craft, cooking, music, drama and much more. There is never a dull day at the farm, with joking, laughing, and fooling about, what's not to like! If you think Nineveh is something that you, or someone you know would be interested in, Feel free to contact Martin, Monday to Friday, 9.30am – 3.30pm on, 01299 832864. Or email ninevehridge@gmail.com. Alternatively, visit our website www.ninevehridgecarefarm.org.uk or visit our Facebook page.

KINLET C OF E PRIMARY SCHOOL

Love to Learn – Learn to Love



- Outdoor play areas
- Small family atmosphere
- Kind – Inspire – Nurturing – Learning – Eco-friendly -Teamwork

www.kinlet.shropshire.sch.uk

admin@kinlet.shropshire.sch.uk

Telephone: 01299 841210

Booton Brothers



Construction

Rich: 07445298747

Mike: 07853225401

bootonbrothers@outlook.com

All building work undertaken

Elite Sweeps

Professional Chimney Sweep

& HETAS Stove Installer

- ✓ Prompt, reliable & friendly service.
- ✓ Cowls and Chimney Pots fitted.
- ✓ Fully qualified and fully insured.
- ✓ Guild certificates issued after every sweep.
- ✓ HETAS Approved Installer.



Call Eddie Tel. 01299 382222 / 07895 612915

www.elitesweeps.co.uk



I.P.T. GROUND SOLUTIONS

Over 30 years experience

For all pipe installations:

- Sewage • Storm drainage
- Blockage/Repairs • Ditches
- Grass Cutting / Hedge Trimming
- Driveways • Ground clearance

For all your ground needs

Contact Ian on:

T: 07870 384 096

E: ian.ptaylor@yahoo.com

W: iptgroundsolutions.co.uk

BOOK YOUR
MOT WITH US



LEWIS MOTORS KINLET

01299 841 391



SERVICING & REPAIRS TO ALL MAKES & MODELS

- Clutches & Cambelts
- Exhausters, Batteries & Tyres
- Wheel Alignment
- Diagnostics
- Recovery
- Welding

Follow us on Facebook: [LewisMotorsKinlet](https://www.facebook.com/LewisMotorsKinlet)

Clebury Clarion May 2022

Page 55



EVERYTHING INTERIOR UPHOLSTERY

REUPHOLSTERY SERVICES:

- AUTOMOTIVE
- CARAVANS
- CAMPER VANS
- TRADITIONAL & MODERN
- COMMERCIAL & BESPOKE
- DOMESTIC
- CARPET & UPHOLSTERY CLEANING
(in partnership with WE GLEAM)

OVER 30 YEARS EXPERIENCE



CONTACT US TODAY

Unit 19 Old Station Business Park, Cleobury Mortimer, DY14 8SY
07961 712683 / 07961 792103
www.everythinginterior.co.uk
email: everythinginterior@outlook.com

Welcome to the April edition of my series of Beating the Scammers. I was gratified to hear from a reader of the Clarion that this person was recently targeted for the so called 'family member in distress' scam. The reader received a social media message. Fortunately, the reader was wise to the scam and reacted totally appropriately and avoided a significant loss. This was what the reader sent. *"I recently had a what's app message which I presumed, at first, was from my daughter. It said that she had dropped her phone and broke it and needed to make a couple of payments. I then remembered the piece in the Clarion regarding a similar message that had been received by one of your readers. So immediately rang my daughter on the landline to ask if she had made this request. As I thought, she hadn't. The first payment they asked for was £941.82; they gave the account name, account number and sort code number for me to transfer the money to. Of course, I immediately deleted the message but first of all I sent all the details to the Action Fraud line."*

Well done that reader, the sum asked for was very significant which suggests to me that these scammers are upping the game somewhat. There is no indication that losses to scammers are reducing. Not so long ago, loss to members of the public was generally through residential burglary and in 2020/2021 it was around £9 million over 267,000 offences. In the same period 412,553 scam offences were reported to the authorities, representing a staggering £2.3 billion. An incredible 5583% increase. Much of this activity has been reported as the increased use of social media including the advertising of goods and services which is increasing with social media such as Facebook. Online shopping scams topped the table as criminals took advantage of the fact that locked-down consumers were buying more items via the internet. These scams – which included people unknowingly buying from fake websites and then finding that the goods never arrive – surged by 65% over the year, with more than 103,000 reports from victims. The total amount lost to this scam was £69m, equating to an average of £674 per reported incident. This underlines the simple warnings that we read such as 'If something looks too good to be true, it probably is' Checking the source of an advert that looks

attractive is not easy, but to give one example, a recent post on a Facebook Community group advertised a service that looked very attractive. But after a few simple checks it was established, the advertiser was fictitious, the face of a mid-30's woman and the name of a very mature US Congress person. Clearly this was one to avoid, with some of the comments from others suggested that this was very much a fake advert. Investment fraud accounted for the most money reported lost overall, at £535m. That works out as an average of £25,489 for each of the 20,989 reported incidents. This type of fraud – incidence of which rose by 50% in a year – typically involves people being tricked into thinking they are making a genuine investment with the prospect of lucrative returns. Some locked-down consumers have ended up losing money after using search engines to research investments, while others were tricked by adverts on social media sites. Many scams involve cryptocurrencies such as bitcoin or schemes that claim to offer early access to pension pots, and some ads carry fake celebrity endorsements. Loneliness has always been a serious issue in our communities and the impact of the internet and social media has led to a significant increase in people looking for love and long-term relationships. Last year Dating scams increased by 40%. These typically involve individuals being tricked into transferring money to people they have met online and not yet face to face. When the scammer has been successful, he or she suddenly disappears (with the money of course). I read recently of one very sad case where a single person was scammed out of an astounding £35,000 in a dating scam. This type of activity and all other scams where people love money is horrific and leaves individuals scarred emotionally, sometimes for life. Please don't be one of these people. Take a moment to **STOP! THINK! CHECK!** If in any doubt don't proceed, report to the authorities if you are suspicious. **STAY SAFE.**

Nigel



Professional Family Estate Planners



- Wills or Lasting Powers of Attorney from £95
- Free Will reviews
- Probate support
- Care home fee avoidance
- Free funeral plan with every Will
- Family Protection Trusts

"A lifetime's attention to complex legal issues as a retired Detective Superintendent and now a Private Client Lawyer means **you can definitely trust Mark and his daughter Lauren** to write your Will"

T: 01299 251442
E: info@ambalegalservices.co.uk
W: ambalegalservices.co.uk



- Appointments by telephone, video link or in the comfort of your own home
- Over 45 years' experience in law
- Friendly and professional support for you and your family
- Call us up to see how we can help!



ARE YOU LOOKING FOR Independent Financial Advice?

Consequential Planning are your local independent financial advisers. We have a highly qualified team with extensive experience in all aspects of financial planning. We can offer help and advice on investments, pensions, protection and mortgages.

Telephone 01299 407128
 to arrange a free financial review or visit:
www.cnsq.co.uk



The Town Council Report

Dog Mess

A regular complaint about our town is the amount of dog mess which is not picked up. It looks terrible and gives a bad impression that people do not care about their town, their fellow residents and visitors. There are so many incidents of people treading in this and walking the mess into cars, schools and homes, causing justifiable annoyance at the smell and inconvenience to clean shoes and carpets.

The Town Council asked the Primary School children to design a poster to be displayed around town to highlight the issues and encourage people to pick up their dog's mess. We are pleased to announce two winners, a pupil from Year 4 and a pupil from Year 6. The winning designs are being made into 60 notices to be placed all around the town to send a message and help inform everyone of the need to pick up dog mess.

There are plenty of bins around town and bagged dog mess can be placed in any bin. Please support your community and help keep Cleobury Mortimer a clean and tidy place to be proud of. If you notice any bins which are full or feel there should be additional bins in any area, please contact the Town Council on 01299 271154 or email cleobury.council@gmail.com.

Trees

Whilst some of us had to tidy up after the recent storms, please be mindful that trees should be maintained by landowners and inspected on a regular basis. If you do need to do any work on trees, please consider that the work should be done preferably when the trees are dormant i.e. mid to late winter.

For general tree maintenance, Shropshire Council has sent the following advice for those people who live in the Conservation Area:

If you live in the Cleobury Mortimer Conservation Area and wish to remove or prune established trees, you are required to give the local planning authority (Shropshire Council) six weeks notice before carrying out work; this is called a Section 211 notice. There is no fee for submitting a notice. You do not need to give notice if you want to work on trees less than 7.5 centimetres in diameter, measured 1.5 metres above the ground, or 10 centimetres if thinning to help the growth of other trees. If in doubt, check with the planning authority.

Enforcement action may be taken by the planning authority where the six weeks notice is not given and trees refelled or pruned. Those who damage or carry out work without permission on a tree with a Tree Preservation Order (TPO) or in a Conservation Area may be fined up to £20,000,

prosecuted for felling without a licence, or served a notice to replace any protected trees that have been destroyed. Serious offences may be escalated to Crown Court trial and result in an unlimited fine.

Upon receipt of a notice to work on or fell trees by the local planning authority, the Town and Country Planning Act give the authority three options. They can either:

Make a Tree Preservation Order (TPO) to protect the trees if justified in the interests of amenity. Any future works proposals would then have to be the subject of a formal complaint under the TPO regulations, or

decide not to make a TPO and allow a six week period to expire and make no formal reply, at which point the applicant has de facto permission to carry out the proposed work as long as it is carried out within two years of the date of the notice, or

decide not to make a TPO and inform the applicant that the work can go ahead.

When making a decision on the merits for raising a TPO a tree's condition, longevity and public visibility are all taken into consideration.

Information and advice is posted on the Shropshire Council web site under Trees, woodlands and hedges <https://shropshire.gov.uk/environment/trees-woodlands-and-hedges/>



Burning Blocks

www.burningblocks.co.uk



A safe and easy to use alternative for logs for both wood stoves and open fires

Discount for local delivery quote: "family10" at the checkout

- Easy to light / roaring fire in under 5 mins
- Easy to stack / 10kg packs
- High heat / similar to coal on output
- Each briquette lasts over an hour
- Low moisture / 8% moisture maximum
- Store undercover

UK wide delivery available, approx. 2 days

buy online at www.burningblocks.co.uk

For more information:-

Email: burningblocks@gmail.com Website: www.burningblocks.co.uk FB: <https://www.facebook.com/burningblocksbriquettes>



Richard Haines

The Worcestershire Chimney Sweep

- ◆ Traditional & Power Sweeping Services
- ◆ Certified Chimney Sweep
- ◆ Insurance Recognised certificate issued



M: 07752 116629 T: 01584 781358 E: lostcity5@hotmail.co.uk

www.theworcestershirechimneysweep.co.uk




LUDLOW FIREWOOD

~ Est 2019 ~

Suppliers of Premium Grade Ready to Burn Firewood, Beautifully Crated and Delivered to Your Door



T 07949 318014

@ ludlowfirewood@gmail.com

IG /ludlowfirewood

F /ludlowfirewood

Station yard, Station road, Woofferton, Ludlow SY8 4AW

WWW.LUDLOWFIREWOOD.COM

Available in Barrow bags and nets for all your access requirements.

In Business - Ludlow Firewood

This is a business built on good, solid common sense foundations. Kevin and Kai Smart were trading as Ludlow Salvage and noticed how many slabs they were supplying for local stove installers to use as a firm base for stoves. Wood burning stoves, a logical choice where mains gas supply is rare. If stoves were so popular - Kevin reckoned about 300 a year were being installed - then supplying logs would be logical extension of the business.

They talked to stove installers and realised that decent quality wood was the obvious choice, not just any old oddments you might find in the woods that could be rotten or damp. For the best heat output and rapid warm up times, thoroughly dry wood is the answer. I can write about that with some feeling, having had a log burner installed 30 plus years ago and finding dry wood a very rare commodity. And if it's not properly dried, you get poor heat output and a very mucky chimney that needs sweeping frequently.

They searched the internet, realised that log supply in some other countries was a vital part of a comfortable winter in cold climates and began to ask questions. A long winded job? Certainly not an overnight one, but the

Smarts were determined that if they were going to go into the log business, they'd do it as well as possible.

Their questioning and searching found the answer with the importer of kiln-dried logs from a major timber company in Latvia who had just what they wanted.



Kevin Smart and a stock of clean, kiln-dried logs in wooden crates, ready for delivery.

They come packed in a cubic metre sized crate, very tightly packed and held together by wooden laths with a supporting steel band. Kevin favours the birch as the best burner and in common with most of Europe, ash is no longer processed because of the danger from ash die-back disease.

Delivery is by small truck with a modest size stacking trolley to unload and deliver to wherever you want it. If

you want to leave your cube outside, they'll supply a fitted woven plastic cover with easy access to the logs by lifting the cover away from its Velcro fastening. It really is as easy as it sounds. The logs are 10 inches long (25 centimetres if you prefer) so easily fit into any stove.

The current requirement that logs are kiln dried so that the moisture content is no more than 20 percent is easily met - it's a lot less than that. So clean burning, easy to start and rapid warmth to make life comfortable.

I have personally bought one of these cubes and it's a revelation how easy it is to get the place warm. One firelighter, a handful of kindling, a match and off you go. Quick and very clean; I'm very happy I chose one.

The Smarts and their crew are easy to deal with and give advice if you want it. Easy peasy warmth .



**Ludlow Firewood are on
07949 318014 or email
ludlowfirewood@gmail.com**

Jim Reynolds



EnergyZone

Integrated Renewable Solutions

SHROPSHIRE HEAT PUMPS

EnergyZone are one of Cleobury's best kept secrets. We are one of the largest and longest established renewable engineering companies in the UK installing heat pumps since 2003. 14 in house engineers with over 130 years combined experience completing over 1000 Domestic and Commercial systems all over the UK. Based next to Hobsons Brewery in Cleobury Mortimer we are your local experts in heat pump systems.

Heat pumps are rapidly becoming the standard heating system for all new build properties, as they always have been in many parts of Europe, and the Government is offering a very generous incentive to encourage anybody with an Oil, LPG or Electric boiler to replace this with a heat pump.

Replacing your boiler with a heat pump has many advantages;

- Lower running costs for your heating - up to 50% lower
- No dependence on fuel deliveries
- Removal of current boiler under our scrappage scheme
- Up to a 10-year warranty with a 20 to 25-year life expectancy
- Government backed Renewable Heat Incentive (RHI) to help cover installation cost over 7-years (available until March 2022)

What can EnergyZone offer?

Complete design and installation of a heat pump system, including all paperwork required to enable you to claim the maximum Government incentive

Upgrade of your old radiators and hot water cylinder if required

Local support with annual servicing through our EZcare package

With the current Government incentive now is a great time to consider scrapping your old fossil fuel boiler and installing a heat pump that is not only good for the planet but also your pocket.

Call us for a free home assessment from one of our engineers.



Fully accredited installers of the brands above ensuring the correct model is selected for your home

01299 270011

www.energyzone.co.uk sales@energyzone.co.uk



Community Contacts for Clarion Readers

CEMETERY ADMINISTRATOR	Theresa Ray	07703 965 064	theresa.25016@hotmail.co.uk
CLEOBURY COUNTRY CENTRE		01299 272300	In Love Lane, 9 to 5 Mon to Fri.
CLEOBURY DENTAL PRACTICE		01299 271747	www.cleoburydental.co.uk
CLEOBURY CARERS	Michelle	01743 341995	carerssupport@shropshire.gov.uk
CLEOBURY COMPASSIONATE COMMUNITIES	Katja Jones	07966 080111	Tuesday and Thursday at the Medical Centre
CLEOBURY MORTIMER LIBRARY		01299 272301	Open 9 to 7 Mon, 9 to 5 Tues/Fri and 10 to 1 Sat.
LOCAL POLICE	PC Wayne Strangwood	07773 054 587	wayne.strangwood@westmercia.pnn.police.uk
CLEOBURY MORTIMER GUIDES	Fiona McCallum	07805 737 555	
CLEOBURY MORTIMER SCOUTS	Lowri Hughes		cleoburybeavers@gmail.com
CRIMESTOPPERS		0800 555 111	Free Police contact. Talk in confidence, to report any crime.
DOMESTIC VIOLENCE HELPLINE		0800 783 1359	Women's Aid, 24 Hour support:
HOME FROM HOSPITAL		01584 878046	Help over the first weeks back home from Age UK
MARKET HALL	Kim	01299 272732	markethall@cleobury.org.uk
MEDICAL CENTRE		01299 270209	Out of surgery hours, use the Shrop Doc Service.
SHROP DOC		111	Service available evenings and weekends
THE MEN'S SHED	Pete Blackburn	07776 243 584	petblack@me.com
THE PHARMACY		01299 270219	Closes for half day on Saturday. Delivers prescriptions
ST ELIZABETH'S CATHOLIC CHURCH	Angela Flowers	01299 270318	Sunday Mass at 9.00am
NIGHTINGALE NURSING FUND	Rosemary Abbiss	01746 718451	
TOWN COUNCIL	Clerk Matthew Sheehan	01299 271154	Cleobury Country Centre 9 to 2 pm, Mon to Fri. www.cleobury.org.uk . Council meets in the Centre on the first Monday of the month
POST OFFICE		01299 270211	In the Select and Save Grocery Store, Church Street
SAINT MARY'S YOUTH PROJECT	Mark Greaves	07828 116810	mark.stmarys@live.co.uk
SHROPSHIRE COUNCIL		0345 678 9000	
SOUTH SHROPSHIRE YOUTH FORUM		01584 874922	
VOLUNTARY CAR SCHEME		01299 666119	Mandy Smith
WASTE DISPOSAL		0345 678 9007	The contractor is Veolia
WATER SUPPLY EMERGENCIES	Severn Trent	0800 783 4444	
NEWLIFE CHURCH	Pastor E Stirrup	01562 630595	Sunday services at 10.30

Collect the Clarion in Cleobury from: Select and Save Grocery, Londis Store, Cleoburrs, Cleobury Cafe, The Severn Hospice Shop, Mid Counties Co-op, Purslows, The Library, Swift's Bakery Tea Room and Tracey's Kreation..

Out in Cleobury Country at: Heath Farm Meats, **Bagginswood;** **Clee Hill Stores;** **Clows Top Stores;** The Sun and Slipper, **Mamble;** **Hopton Bank Service Station;** ; **Ludlow Library;** **Mahorall Cider Farm;** The Colliers Cafe & Shop, **Rock;** The Fighting Cocks, **Stottesdon;** The Duck Inn, **Chorley;** The Live and Let Live, **Neen Sollars;** The Eagle and Serpent, **Kinlet;** Parker Motors, **Ditton Priors.**

Copies are also available from the Parish Churches in: Cleobury Mortimer, Bayton, Doddington, Hopton Wafers, Milson, Neen Savage and Neen Sollars.

Missed your Clarion? Cleobury Mortimer Library keeps the current month's copy on file and all back issues are available to read as pdfs from www.cleoburyclarion.co.uk.

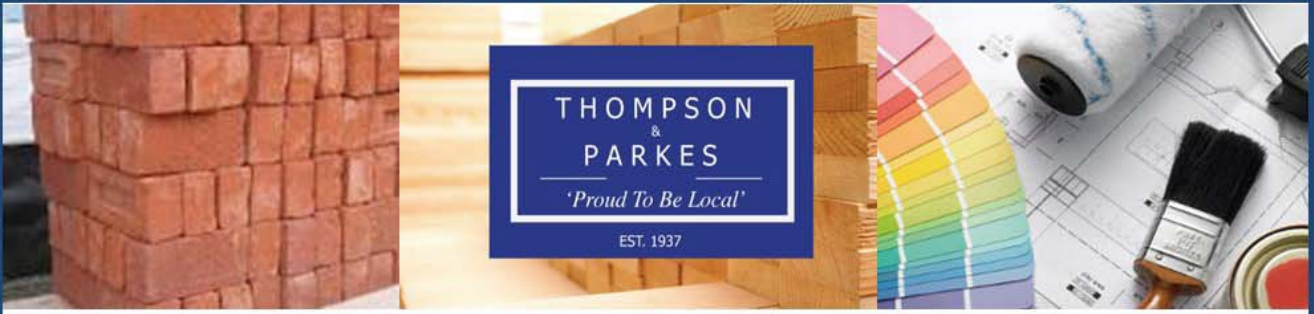
DEADLINE FOR THE MAY ISSUE: APRIL 22nd. CONTRIBUTORS PLEASE NOTE THAT THIS IS THE LAST POSSIBLE DATE TO RECEIVE REPORTS.

Editor and Advertising Sales: Jim Reynolds, 4 Childe Road, Cleobury Mortimer, Shropshire DY14 8PA. Telephone: 01299 270642 Mobile: 07410 977 212

E-Mail: editor@cleoburyclarion.co.uk or uncle.jim@icloud.com

The Clarion On The Web: www.cleoburyclarion.co.uk

Printed by Badger Print and Design of Shifnal, 01952 730511



Your local specialist supplier of
Insulation, Timber, Plywood and all Building Materials

THOMPSON & PARKES

SANDSTONE - Best offer locally!

A natural product, Stoneplus Raj Indian sandstone has subtle tones and ideal for traditional patios.

15.25m² patio packs including 900 x 600, 600 x 600, 600 x 300 and 300 x 300 slabs

Just £24.50/m² - £373.63 +VAT per pack

While stocks last and available at all outlets!



Proud to be Local

www.thompsonandparkes.co.uk

Stocking and Delivering all Your Building and DIY Materials

Kidderminster 01562 745881
Oldington Trading Estate DY11 7QP

Oreton 01746 718414
Cleobury Mortimer DY14 0TH

Stourport 01299 534545
Minster Road DY13 8AB